



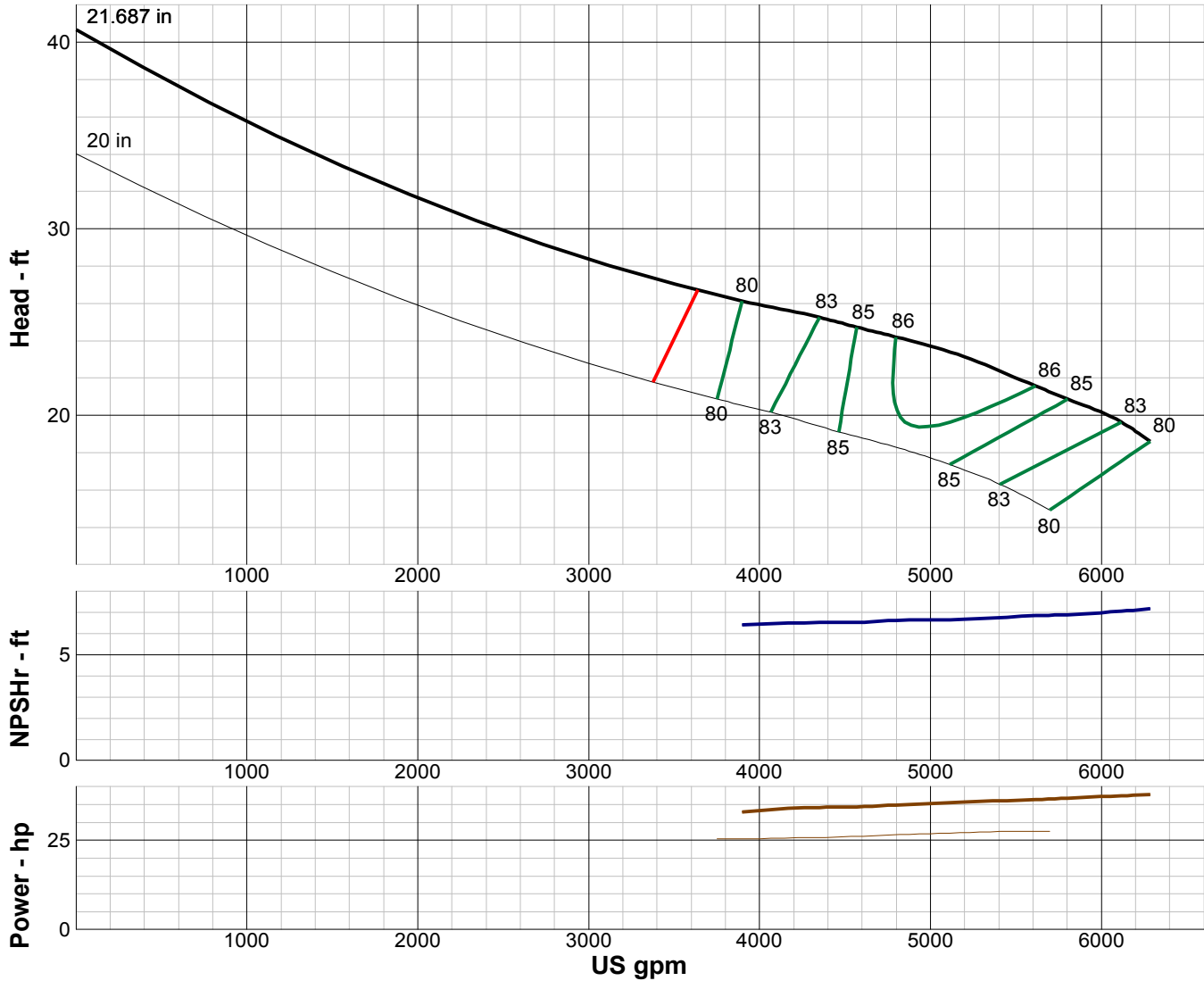
# TURBINE PUMP CURVE

SINGLE STAGE PERFORMANCE

JANUARY 2010

## 480 SERIES

## 30LC 490 RPM



IMPELLER DATA		
IMPELLER NUMBER	0192	Minimum submergence above eye of bottom impeller: 60 IN.
TYPE	ENCLOSED	
THRUST FACTOR	K=67.50	
EYE AREA	175 SQ. IN.	
WEIGHT	440 LB.	

EFFICIENCY CORRECTION				
NUMBER OF BOWLS:	1	2	3	
CHANGE AS FOLLOWS:	-2	0	+1	
CHANGE IN EFFICIENCY MAY AFFECT BOTH HEAD AND HORSEPOWER.				

PUMP MATERIAL EFFICIENCY CORRECTION				
	DUCTILE	BRONZE	NI-R	STAINLESS
IMPELLER MATERIAL:	-1	0	-1	-1
BOWL MATERIAL:	-1	-1	-1	-2

FLANGED BOWL DATA	
BOWL NUMBER	0235
BOWL MAX. DIAMETER	30.000 IN.
BOWL MIN. DIAMETER	30.000 IN.
MAX. NO. STAGES	5
ONE STAGE WEIGHT	4500 LB.
ADD STAGE WEIGHT	2000 LB.
STD. SHAFT DIA.	3.250 IN.
STD. LATERAL	1.375 IN.
DISCHARGE SIZE	N/A
DISCHARGE CONNECTION	FLG.
SUCTION BELL DIA.	33.250 IN.
SUCTION CONNECTION	BELL
MAX. SPHERE SIZE	2.500 IN.
MAX. OPERATIONAL P.S.I.	250 (SPECIAL)

Performance based on pumping clear, fresh water at a temperature not over 85° F., free of gas, air or abrasives and with bowls properly adjusted and submerged. Performance curve reflects Hydraulic Institute tolerances and guidelines.



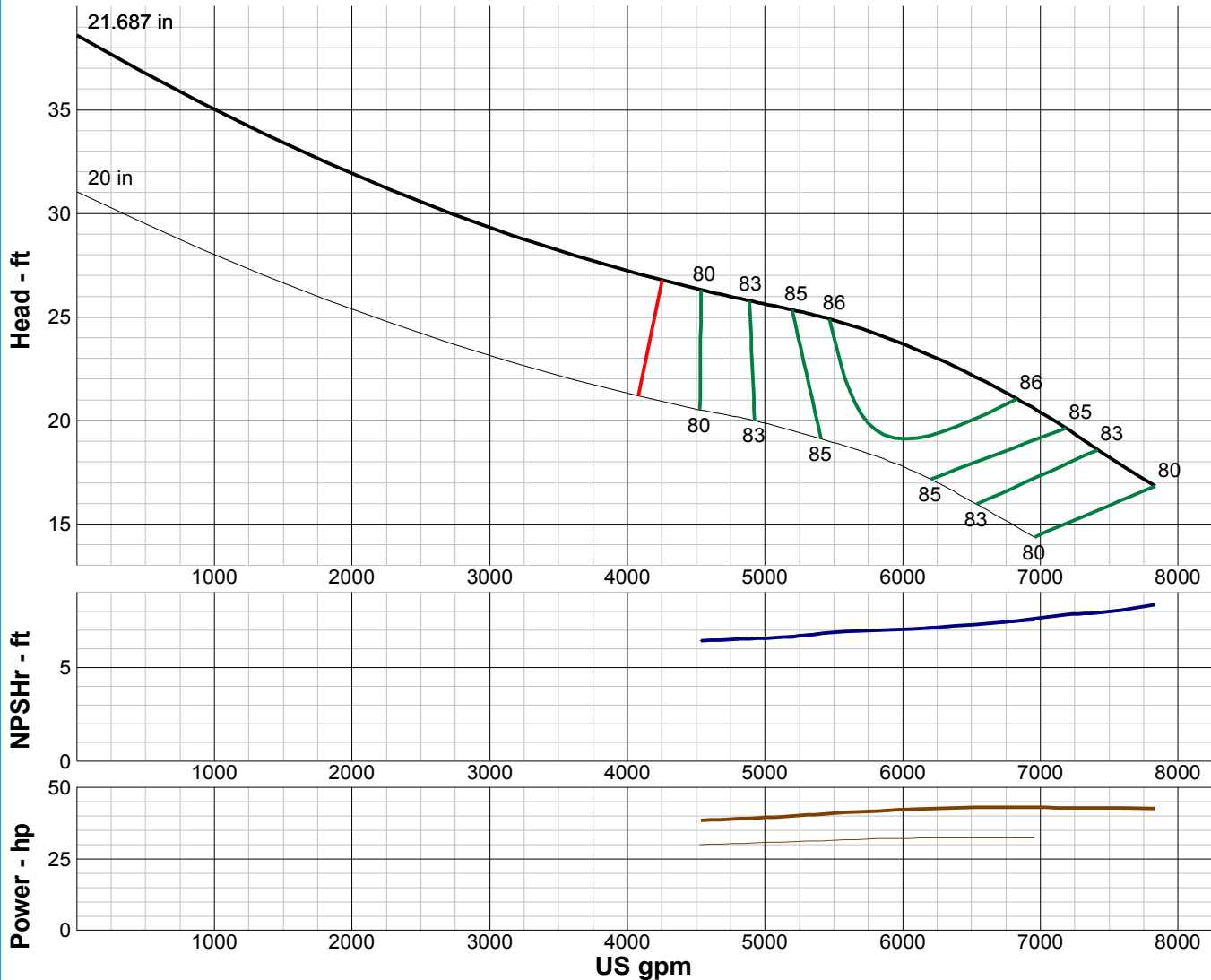
# TURBINE PUMP CURVE

SINGLE STAGE PERFORMANCE

JANUARY 2010

## 480 SERIES

## 30MC 490 RPM



IMPELLER DATA		
IMPELLER NUMBER	0193	Minimum submergence above eye of bottom impeller: 50 IN.
TYPE	ENCLOSED	
THRUST FACTOR	K=67.50	
EYE AREA	175 SQ. IN.	
WEIGHT	440 LB.	

FLANGED BOWL DATA	
BOWL NUMBER	0235
BOWL MAX. DIAMETER	30.000 IN.
BOWL MIN. DIAMETER	30.000 IN.
MAX. NO. STAGES	5
ONE STAGE WEIGHT	4500 LB.
ADD STAGE WEIGHT	2000 LB.
STD. SHAFT DIA.	3.250 IN.
STD. LATERAL	1.375 IN.
DISCHARGE SIZE	N/A
DISCHARGE CONNECTION	BELL
SUCTION BELL DIA.	33.250 IN.
SUCTION CONNECTION	BELL
MAX. SPHERE SIZE	2.500 IN.
MAX. OPERATIONAL P.S.I.	250 (SPECIAL)

EFFICIENCY CORRECTION				
NUMBER OF BOWLS:	1	2		
CHANGE AS FOLLOWS:	-2	0		
CHANGE IN EFFICIENCY MAY AFFECT BOTH HEAD AND HORSEPOWER.				

PUMP MATERIAL EFFICIENCY CORRECTION				
	DUCTILE	BRONZE	NI-R	STAINLESS
IMPELLER MATERIAL:	-1	0	-1	-1
BOWL MATERIAL:	-1	-1	-1	-2

Performance based on pumping clear, fresh water at a temperature not over 85° F., free of gas, air or abrasives and with bowls properly adjusted and submerged. Performance curve reflects Hydraulic Institute tolerances and guidelines.



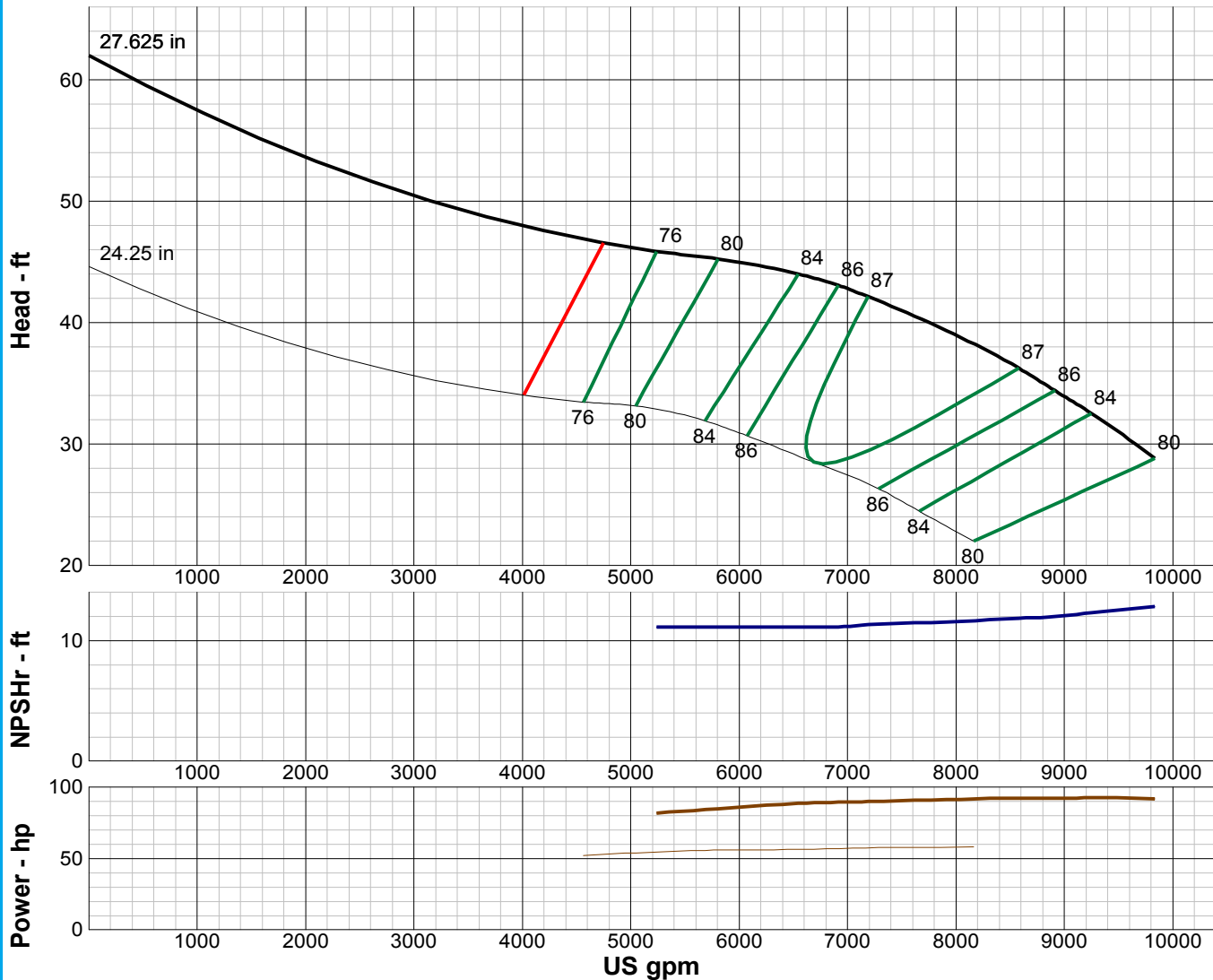
# TURBINE PUMP CURVE

SINGLE STAGE PERFORMANCE

JANUARY 2010

## 480 SERIES

## 36LC 490 RPM



IMPELLER DATA		
IMPELLER NUMBER	1927	Minimum submergence above eye of bottom impeller: 65 IN.
TYPE	ENCLOSED	
THRUST FACTOR	K=94.50	
EYE AREA	215 SQ. IN.	
WEIGHT	440 LB.	

EFFICIENCY CORRECTION				
NUMBER OF BOWLS:	1	2	3	
CHANGE AS FOLLOWS:	-2	-1	0	
CHANGE IN EFFICIENCY MAY AFFECT BOTH HEAD AND HORSEPOWER.				

PUMP MATERIAL EFFICIENCY CORRECTION				
	DUCTILE	BRONZE	NI-R	STAINLESS
IMPELLER MATERIAL:	-1	0	-1	-1
BOWL MATERIAL:	-1	-1	-1	-2

FLANGED BOWL DATA	
BOWL NUMBER	1909
BOWL MAX. DIAMETER	36.000 IN.
BOWL MIN. DIAMETER	36.000 IN.
MAX. NO. STAGES	2
ONE STAGE WEIGHT	4500 LB.
ADD STAGE WEIGHT	2000 LB.
STD. SHAFT DIA.	3.250 IN.
STD. LATERAL	1.250 IN.
DISCHARGE SIZE	N/A
DISCHARGE CONNECTION	FLG.
SUCTION BELL DIA.	42.000 IN.
SUCTION CONNECTION	BELL
MAX. SPHERE SIZE	2.500 IN.
MAX. OPERATIONAL P.S.I.	200 (SPECIAL)

Performance based on pumping clear, fresh water at a temperature not over 85° F., free of gas, air or abrasives and with bowls properly adjusted and submerged. Performance curve reflects Hydraulic Institute tolerances and guidelines.



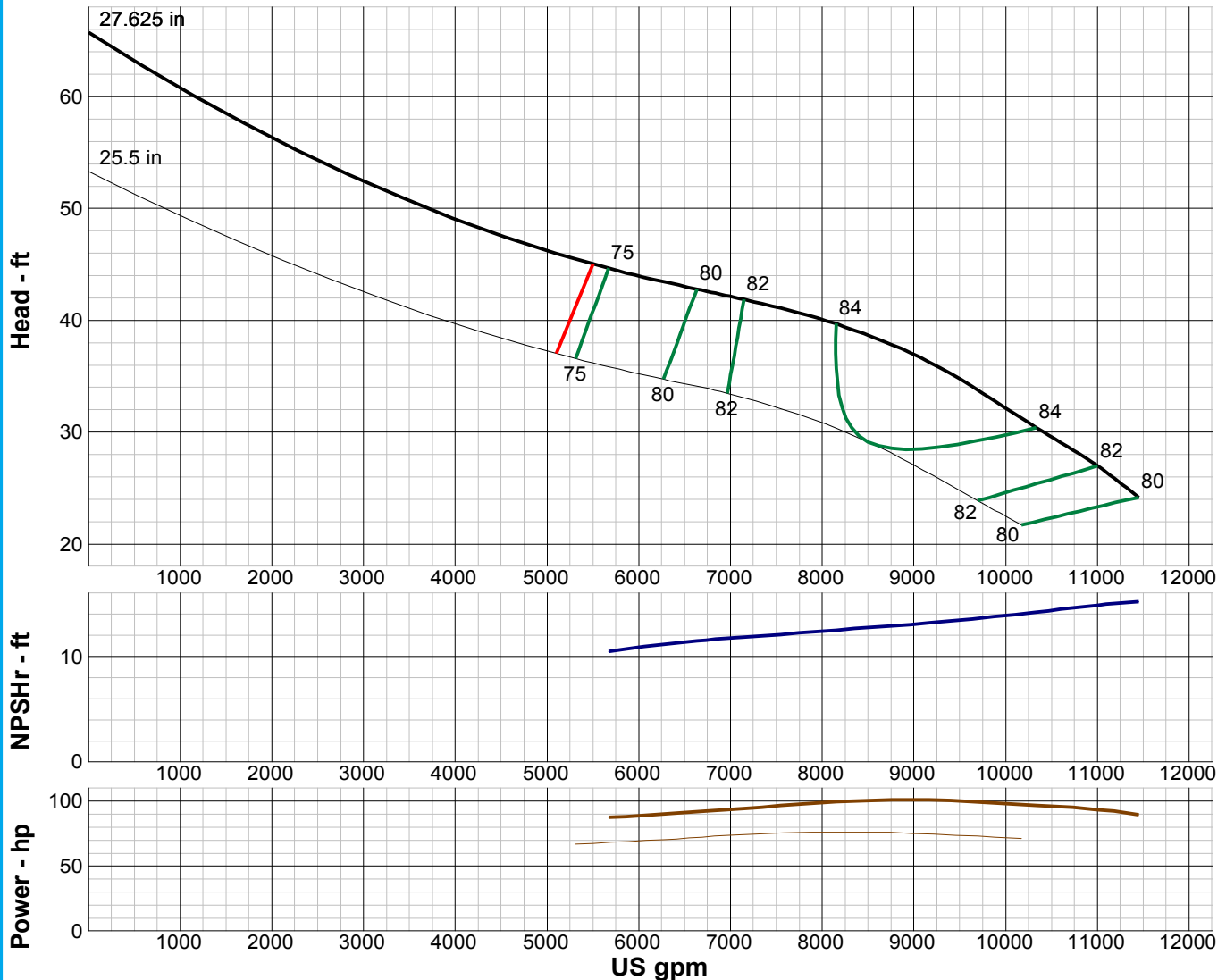
# TURBINE PUMP CURVE

SINGLE STAGE PERFORMANCE

JANUARY 2010

## 480 SERIES

## 36MC 490 RPM



IMPELLER DATA		
IMPELLER NUMBER	1936	Minimum submergence above eye of bottom impeller: 65 IN.
TYPE	ENCLOSED	
THRUST FACTOR	K=94.50	
EYE AREA	215 SQ. IN.	
WEIGHT	440 LB.	

EFFICIENCY CORRECTION				
NUMBER OF BOWLS:	1	2	3	
CHANGE AS FOLLOWS:	-2	-1	0	
CHANGE IN EFFICIENCY MAY AFFECT BOTH HEAD AND HORSEPOWER.				

PUMP MATERIAL EFFICIENCY CORRECTION				
	DUCTILE	BRONZE	NI-R	STAINLESS
IMPELLER MATERIAL:	-1	0	-1	-1
BOWL MATERIAL:	-1	-1	-1	-2

FLANGED BOWL DATA	
BOWL NUMBER	1909
BOWL MAX. DIAMETER	36.000 IN.
BOWL MIN. DIAMETER	36.000 IN.
MAX. NO. STAGES	2
ONE STAGE WEIGHT	4500 LB.
ADD STAGE WEIGHT	2000 LB.
STD. SHAFT DIA.	3.250 IN.
STD. LATERAL	1.250 IN.
DISCHARGE SIZE	N/A
DISCHARGE CONNECTION	FLG.
SUCTION BELL DIA.	42.000 IN.
SUCTION CONNECTION	BELL
MAX. SPHERE SIZE	2.500 IN.
MAX. OPERATIONAL P.S.I.	200 (SPECIAL)

Performance based on pumping clear, fresh water at a temperature not over 85° F., free of gas, air or abrasives and with bowls properly adjusted and submerged. Performance curve reflects Hydraulic Institute tolerances and guidelines.



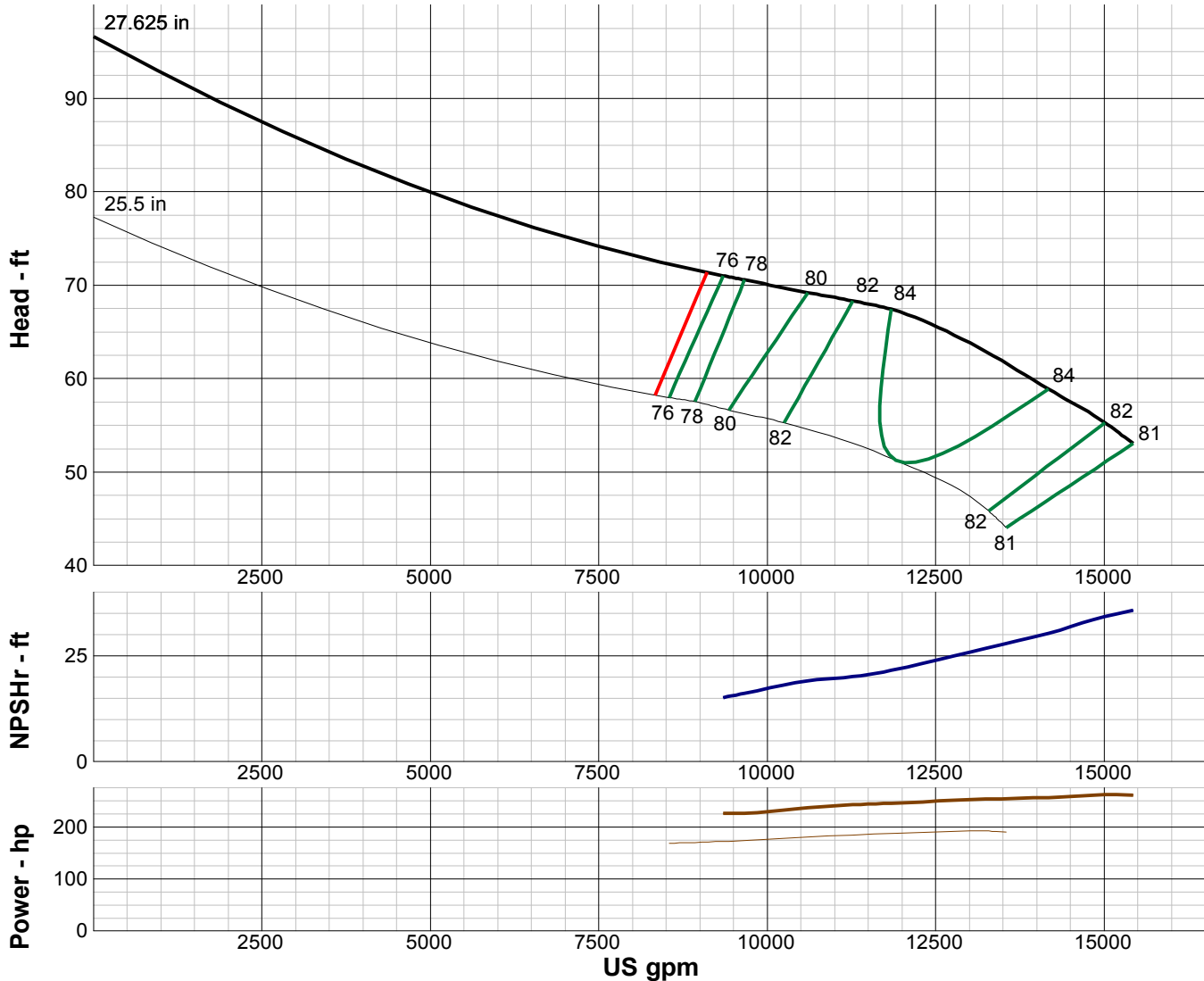
# TURBINE PUMP CURVE

SINGLE STAGE PERFORMANCE

JANUARY 2010

## 480 SERIES

## 36HC 490 RPM



IMPELLER DATA		
IMPELLER NUMBER	1945	Minimum submergence above eye of bottom impeller: 65 IN.
TYPE	ENCLOSED	
THRUST FACTOR	K=94.50	
EYE AREA	215 SQ. IN.	
WEIGHT	440 LB.	

EFFICIENCY CORRECTION				
NUMBER OF BOWLS:	1	2	3	
CHANGE AS FOLLOWS:	-2	-1	0	
CHANGE IN EFFICIENCY MAY AFFECT BOTH HEAD AND HORSEPOWER.				

PUMP MATERIAL EFFICIENCY CORRECTION				
	DUCTILE	BRONZE	NI-R	STAINLESS
IMPELLER MATERIAL:	-1	0	-1	-1
BOWL MATERIAL:	-1	-1	-1	-2

FLANGED BOWL DATA	
BOWL NUMBER	1909
BOWL MAX. DIAMETER	36.000 IN.
BOWL MIN. DIAMETER	36.000 IN.
MAX. NO. STAGES	2
ONE STAGE WEIGHT	4500 LB.
ADD STAGE WEIGHT	2000 LB.
STD. SHAFT DIA.	3.250 IN.
STD. LATERAL	1.250 IN.
DISCHARGE SIZE	N/A
DISCHARGE CONNECTION	FLG.
SUCTION BELL DIA.	42.000 IN.
SUCTION CONNECTION	BELL
MAX. SPHERE SIZE	2.500 IN.
MAX. OPERATIONAL P.S.I.	200 (SPECIAL)

Performance based on pumping clear, fresh water at a temperature not over 85° F., free of gas, air or abrasives and with bowls properly adjusted and submerged. Performance curve reflects Hydraulic Institute tolerances and guidelines.



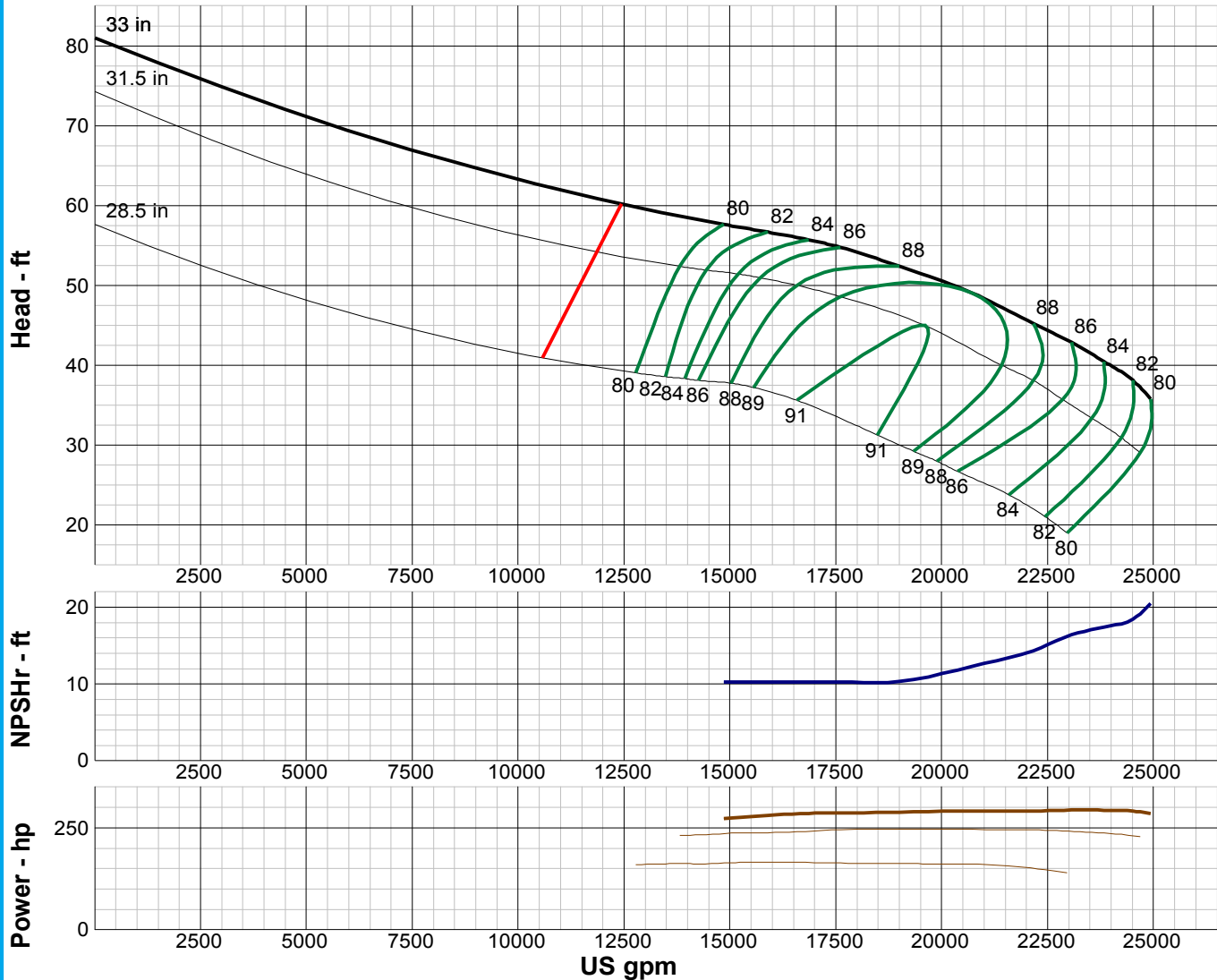
# TURBINE PUMP CURVE

SINGLE STAGE PERFORMANCE

JANUARY 2010

## 480 SERIES

## 42MC 490 RPM



IMPELLER DATA		
IMPELLER NUMBER	0244	Minimum submergence above eye of bottom impeller: 90 IN.
TYPE	ENCLOSED	
THRUST FACTOR	K=150.00	
EYE AREA	390 SQ. IN.	
WEIGHT	875 LB.	

FLANGED BOWL DATA	
BOWL NUMBER	0242
BOWL MAX. DIAMETER	42.500 IN.
BOWL MIN. DIAMETER	42.500 IN.
MAX. NO. STAGES	3
ONE STAGE WEIGHT	5250 LB.
ADD STAGE WEIGHT	3550 LB.
STD. SHAFT DIA.	4.000 IN.
STD. LATERAL	1.125 IN.
DISCHARGE SIZE	N/A
DISCHARGE CONNECTION	FLG.
SUCTION BELL DIA.	48.000 IN.
SUCTION CONNECTION	BELL
MAX. SPHERE SIZE	3.500 IN.
MAX. OPERATIONAL P.S.I.	200 (SPECIAL)

EFFICIENCY CORRECTION				
NUMBER OF BOWLS:	1	2		
CHANGE AS FOLLOWS:	-1	0		
CHANGE IN EFFICIENCY MAY AFFECT BOTH HEAD AND HORSEPOWER.				

PUMP MATERIAL EFFICIENCY CORRECTION				
	DUCTILE	BRONZE	NI-R	STAINLESS
IMPELLER MATERIAL:	-1	0	-1	-1
BOWL MATERIAL:	-1	-1	-1	-2

Performance based on pumping clear, fresh water at a temperature not over 85° F., free of gas, air or abrasives and with bowls properly adjusted and submerged. Performance curve reflects Hydraulic Institute tolerances and guidelines.



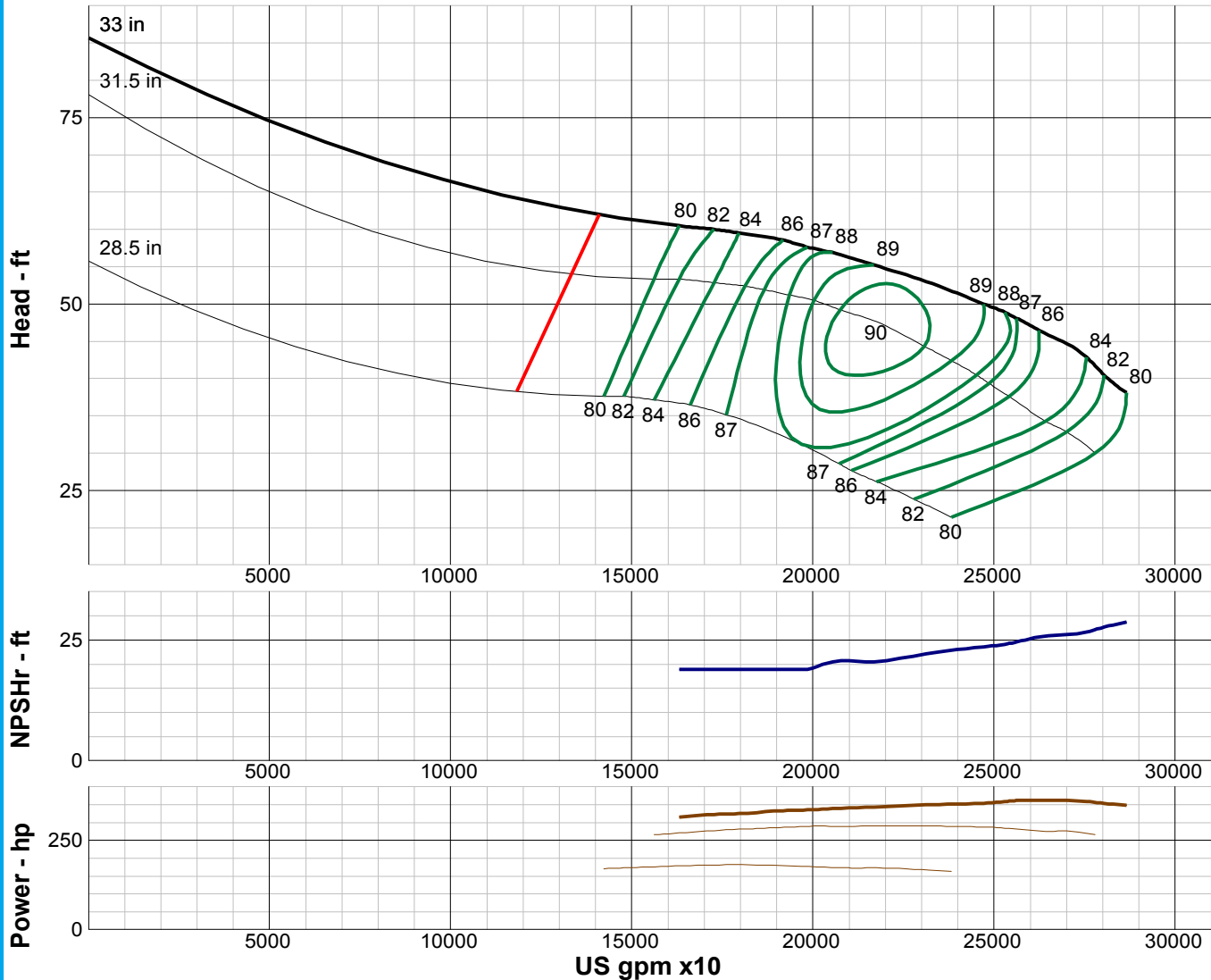
# TURBINE PUMP CURVE

SINGLE STAGE PERFORMANCE

JANUARY 2010

## 480 SERIES

## 42HC 490 RPM



### IMPELLER DATA

IMPELLER NUMBER	0245	Minimum submergence above eye of bottom impeller: 90 IN.
TYPE	ENCLOSED	
THRUST FACTOR	K=150.00	
EYE AREA	390 SQ. IN.	
WEIGHT	875 LB.	

### EFFICIENCY CORRECTION

NUMBER OF BOWLS:	1	2			
CHANGE AS FOLLOWS:	-1	0			
CHANGE IN EFFICIENCY MAY AFFECT BOTH HEAD AND HORSEPOWER.					

### PUMP MATERIAL EFFICIENCY CORRECTION

	DUCTILE	BRONZE	NI-R	STAINLESS
IMPELLER MATERIAL:	-1	0	-1	-1
BOWL MATERIAL:	-1	-1	-1	-2

### FLANGED BOWL DATA

BOWL NUMBER	0242
BOWL MAX. DIAMETER	42.500 IN.
BOWL MIN. DIAMETER	42.500 IN.
MAX. NO. STAGES	3
ONE STAGE WEIGHT	5250 LB.
ADD STAGE WEIGHT	3550 LB.
STD. SHAFT DIA.	4.000 IN.
STD. LATERAL	1.125 IN.
DISCHARGE SIZE	N/A
DISCHARGE CONNECTION	FLG.
SUCTION BELL DIA.	48.000 IN.
SUCTION CONNECTION	BELL
MAX. SPHERE SIZE	3.500 IN.
MAX. OPERATIONAL P.S.I.	200 (SPECIAL)

Performance based on pumping clear, fresh water at a temperature not over 85° F., free of gas, air or abrasives and with bowls properly adjusted and submerged. Performance curve reflects Hydraulic Institute tolerances and guidelines.