

3" (76mm) HEAVY DUTY BOLTED STYLE PUMP



3" (76mm) HEAVY DUTY BOLTED STYLE PUMP

Engineered for maximum fluid and chemical compatibility. Heavy duty, stall free, non-metallic air section ensures stall free and freeze free operation. Rugged valve system allows operation under a variety of conditions, ranging from clean fluids to slurries, to solids applications. Bolted design provides ease of maintenance and leak free operation.

- Suitable for Clean Fluids, Slurries or up to 7/16" Solids
- Heavy Duty Air Valve
- Aluminum Chamber
- Muffler Included

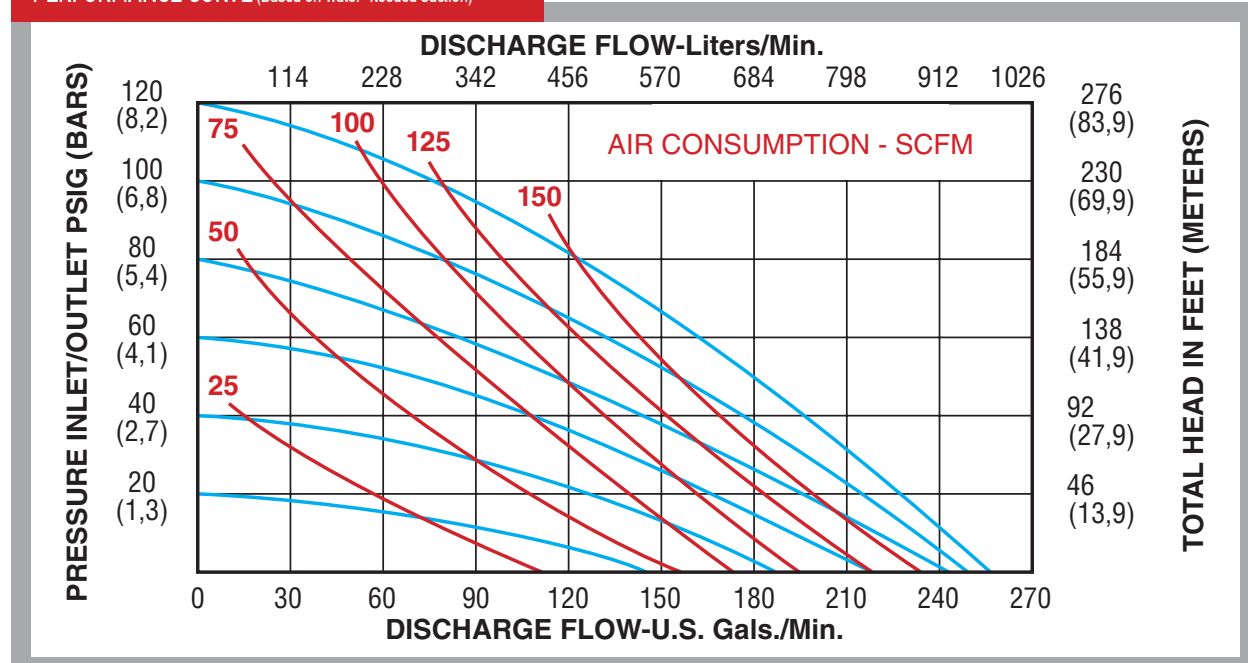
*Carrying handles available (sold separately)

SPECIFICATIONS

Dimension	
Physical Dimensions	See Drawing Page 79
Air Inlet	3/4"
Liquid Inlet	3" (76 mm)
Liquid Outlet	3" (76 mm)
Weight	see product tables
Performance	
Maximum Flow	255 gpm (681 lpm)
Maximum Air Pressure	120 psi (8.2 bar)
Maximum Solids	7/16" (11.1 mm)
Max Suction Lift Dry	15 ft (4.5 m)
Max Suction Lift Wet	26 ft (7.9 m)
Max Suction Lift Dry with PTFE	10 ft (3 m)
Max Temperature	See Product Tables
Noise Level (with muffler)	86 dBA
Displacement Per Stroke	1.23 Gallons (4.66 l)



PERFORMANCE CURVE (Based on water-flooded suction)



3" (76mm) - ALUMINUM - General purpose pump, suitable for water, oils, most solvents, and most paints. Please consult chemical compatibility tables or www.all-flo.com for your particular application.

PART NUMBER	DIAPHRAGM MATERIAL	VALVE/BALL MATERIAL	VALVE SEAT MATERIAL	O-RING MATERIAL	FASTENER MATERIAL	WEIGHT LBS (KG)	MAX TEMPERATURE °F (°C)	DIMENSIONAL DIAGRAM	CONNECT TYPE
AL-30T	PTFE	PTFE	Nylon	PTFE	SS & PS	150 (68)	212 (100)	Pg. 79	NPT
AL-30E	Santoprene®	Santoprene®	EPDM	N/A	SS & PS	150 (68)	212 (100)	Pg. 79	NPT
AN-30	Nitrile	Nitrile	Nitrile	N/A	SS & PS	150 (68)	150 (66)	Pg. 79	NPT
AL-30	Urethane	Geolast®	Nitrile	N/A	SS & PS	150 (68)	150 (66)	Pg. 79	NPT
AL-30V	Viton®	Viton®	Viton®	N/A	SS & PS	150 (68)	212 (100)	Pg. 79	NPT
AL-30V-P15	Viton®	Viton®	Viton®	N/A	SS & PS	150 (68)	212 (100)	Pg. 79	BSP
AL-30T-P15	PTFE	PTFE	Nylon	PTFE	SS & PS	150 (68)	212 (100)	Pg. 79	BSP
AL-30E-P15	Santoprene®	Santoprene®	EPDM	N/A	SS & PS	150 (68)	212 (100)	Pg. 79	BSP
AN-30-P15	Nitrile	Nitrile	Nitrile	N/A	SS & PS	150 (68)	150 (66)	Pg. 79	BSP
AL-30-P15	Urethane	Geolast®	Nitrile	N/A	SS & PS	150 (68)	150 (66)	Pg. 79	BSP

AVAILABLE OPTIONS - Each pump can be configured to suit a particular application. Please see the options section for detailed product information on the following available options.

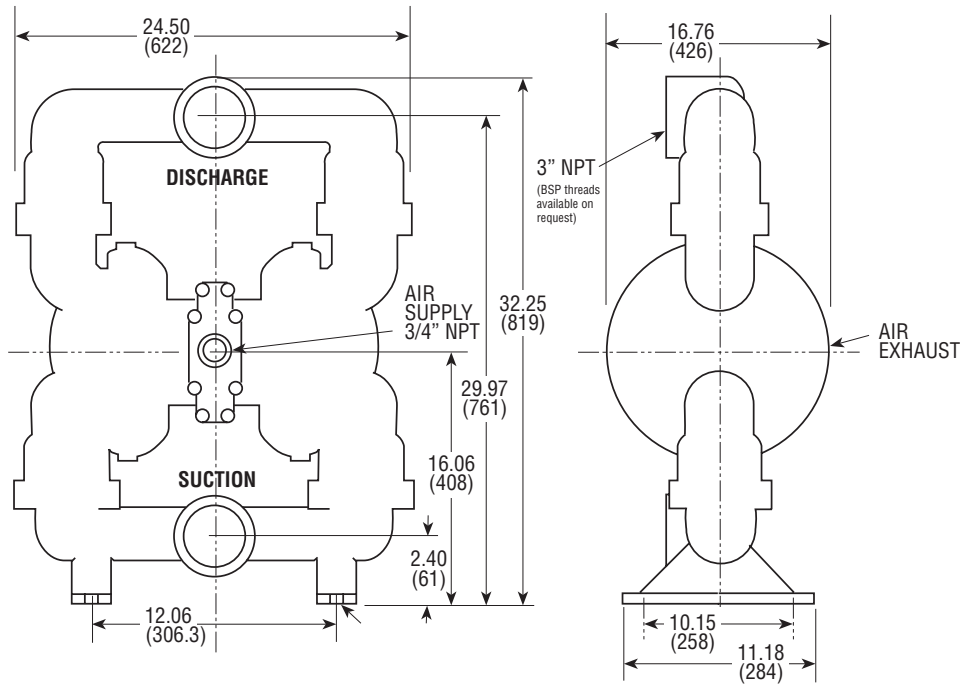
AIR VALVE OPTIONS	SEE PAGE
CYCLE COUNT VALVE	67
BALL VALVE OPTIONS	
PTFE	67
SANTOPRENE®	67
NITRILE	67
EPDM	67
HEAVY NITRILE	67
HEAVY SANTOPRENE®	67
WETTED CHAMBER FINISH OPTIONS	
HARD COAT ANODIZING	67
HARDWARE OPTIONS	
PTFE COATED HARDWARE	67
HANDLES	67
O-RINGS	
PTFE O-RINGS	67
NITRILE O-RINGS	67
EPDM O-RINGS	67
VITON® O-RINGS	67
PORTING OPTIONS	
BSP THREADS	68
DISCHARGE / AIR EXHAUST	68
SUCTION / AIR EXHAUST	68

AVAILABLE ACCESSORIES - Please see the accessories section for detailed product information on the following available accessories.

AIR	SEE PAGE
FILTER/REGULATOR/GAUGE	60
SOLENOID VALVES	60
AIR FLOW CONTROL VALVES	60
NEEDLE VALVE	60
PUMP	
BASE	63
STRAINER BASE	63

3" BOLTED STYLE HEAVY DUTY PUMP

Dimensions in inches and (mm). Ports shown facing front for dimensional purposes.
For detailed dimensional drawings, please visit www.all-flo.com



A PIPELINE TO THE PERFECT PUMP.



All the information you need to find the perfect pump is now right at your fingertips. Just log on to the new All-Flo website at ww.all-flo.com and find:

- Detailed Product Information
- Application Engineering
- Pump Sizing
- Chemical Compatibility Tables
- Repair Kit Information
- Detailed Drawings
- Manuals
- Application Support
- Trouble Shooting FAQs

VISIT WWW.ALL-FLO.COM