



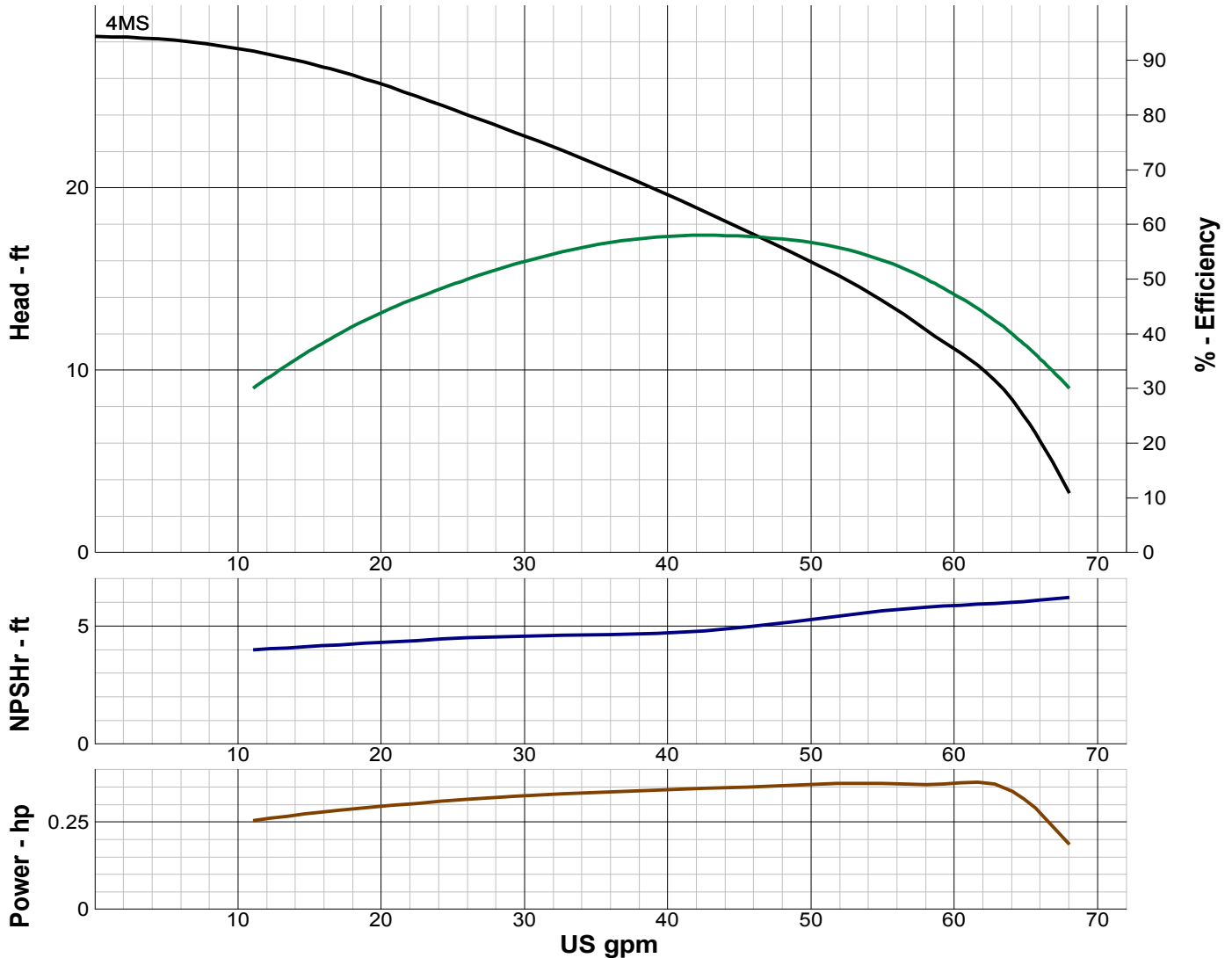
TURBINE PUMP CURVE

SINGLE STAGE PERFORMANCE

JANUARY 2010

480 SERIES

4MS 3450 RPM



IMPELLER DATA

IMPELLER NUMBER	3607	Minimum submergence above eye of bottom impeller: 7 IN.
TYPE	SEMI-OPEN	
THRUST FACTOR	K=1.56	
EYE AREA	2.46 SQ. IN.	
WEIGHT	1.00 LB.	

EFFICIENCY CORRECTION

NUMBER OF BOWLS:	1	2	3	4
CHANGE AS FOLLOWS:	-3	-2	-1	0

CHANGE IN EFFICIENCY MAY AFFECT BOTH HEAD AND HORSEPOWER.

PUMP MATERIAL EFFICIENCY CORRECTION

	DUCTILE	BRONZE	NI-R	STAINLESS
IMPELLER MATERIAL:	-1	0	-1	-4
BOWL MATERIAL:	-1	-1	-1	-8

THREADED BOWL DATA

BOWL NUMBER	3031
BOWL MAX. DIAMETER	3.625 IN.
BOWL MIN. DIAMETER	3.625 IN.
MAX. NO. STAGES	12
ONE STAGE WEIGHT	35 LB.
ADD STAGE WEIGHT	10 LB.
STD. SHAFT DIA.	0.750 IN.
STD. LATERAL	0.375 IN.
DISCHARGE SIZE	2.50 - 3.00 IN.
DISCHARGE CONNECTION	THD
SUCTION SIZE	2.50 IN.
SUCTION CONNECTION	THD
MAX. SPHERE SIZE	0.125 IN.
MAX. OPERATIONAL P.S.I.	360 (SPECIAL)

Performance based on pumping clear, fresh water at a temperature not over 85° F., free of gas, air or abrasives and with bowls properly adjusted and submerged. Performance curve reflects Hydraulic Institute tolerances and guidelines.



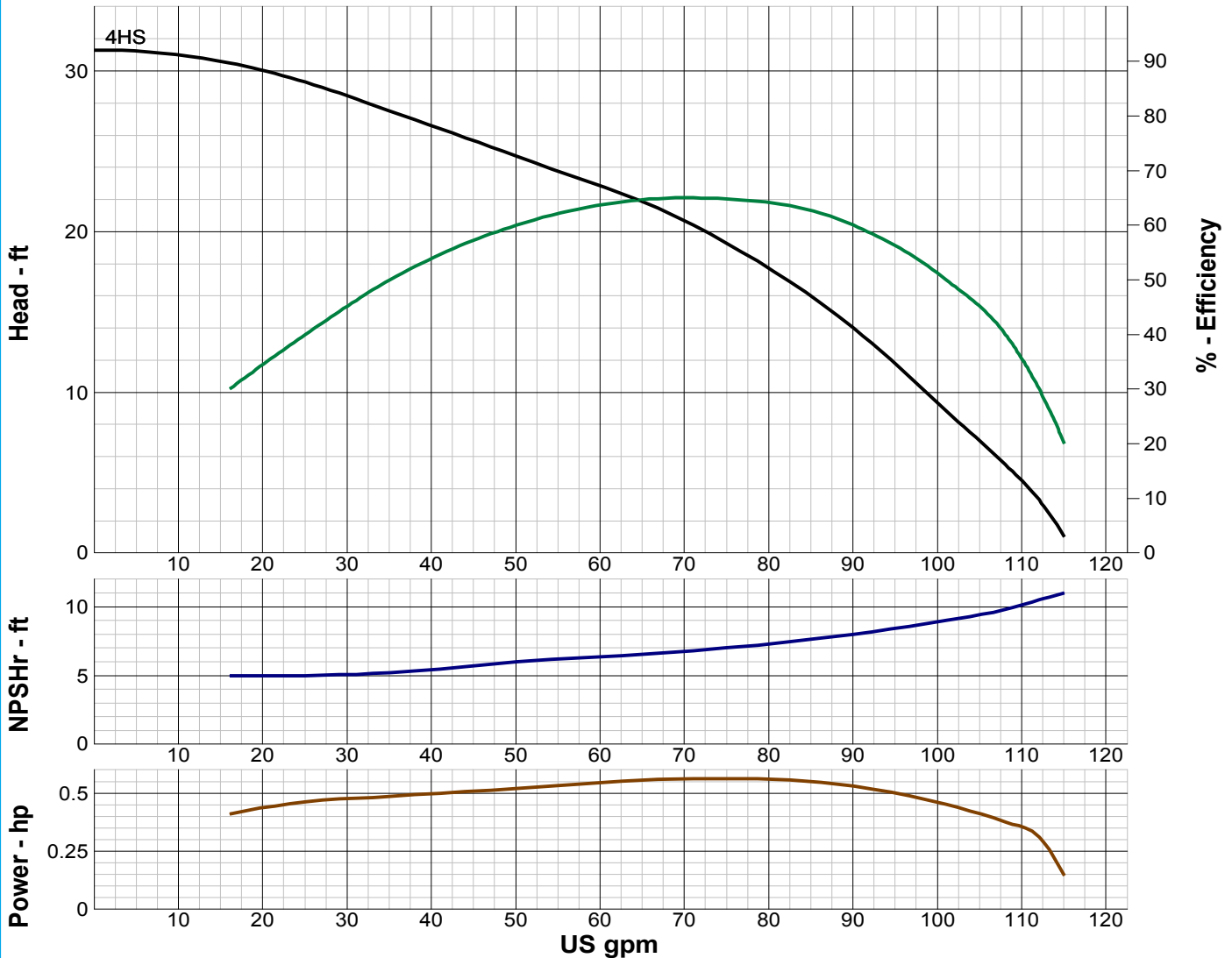
TURBINE PUMP CURVE

SINGLE STAGE PERFORMANCE

JANUARY 2010

480 SERIES

4HS 3450 RPM



IMPELLER DATA

IMPELLER NUMBER	3607	Minimum submergence above eye of bottom impeller: 7 IN.
TYPE	SEMI-OPEN	
THRUST FACTOR	K=1.50	
EYE AREA	2.46 SQ. IN.	
WEIGHT	1.00 LB.	

EFFICIENCY CORRECTION

NUMBER OF BOWLS:	1	2	3	4
CHANGE AS FOLLOWS:	-3	-2	-1	0
CHANGE IN EFFICIENCY MAY AFFECT BOTH HEAD AND HORSEPOWER.				

PUMP MATERIAL EFFICIENCY CORRECTION

	DUCTILE	BRONZE	NI-R	STAINLESS
IMPELLER MATERIAL:	-1	0	-1	-4
BOWL MATERIAL:	-1	-1	-1	-8

THREADED BOWL DATA

BOWL NUMBER	3031
BOWL MAX. DIAMETER	3.625 IN.
BOWL MIN. DIAMETER	3.625 IN.
MAX. NO. STAGES	12
ONE STAGE WEIGHT	35 LB.
ADD STAGE WEIGHT	10 LB.
STD. SHAFT DIA.	0.750 IN.
STD. LATERAL	0.250 IN.
DISCHARGE SIZE	2.50 - 3.00 IN.
DISCHARGE CONNECTION	THD
SUCTION SIZE	2.50 IN.
SUCTION CONNECTION	THD
MAX. SPHERE SIZE	0.125 IN.
MAX. OPERATIONAL P.S.I.	360 (SPECIAL)

Performance based on pumping clear, fresh water at a temperature not over 85° F., free of gas, air or abrasives and with bowls properly adjusted and submerged. Performance curve reflects Hydraulic Institute tolerances and guidelines.



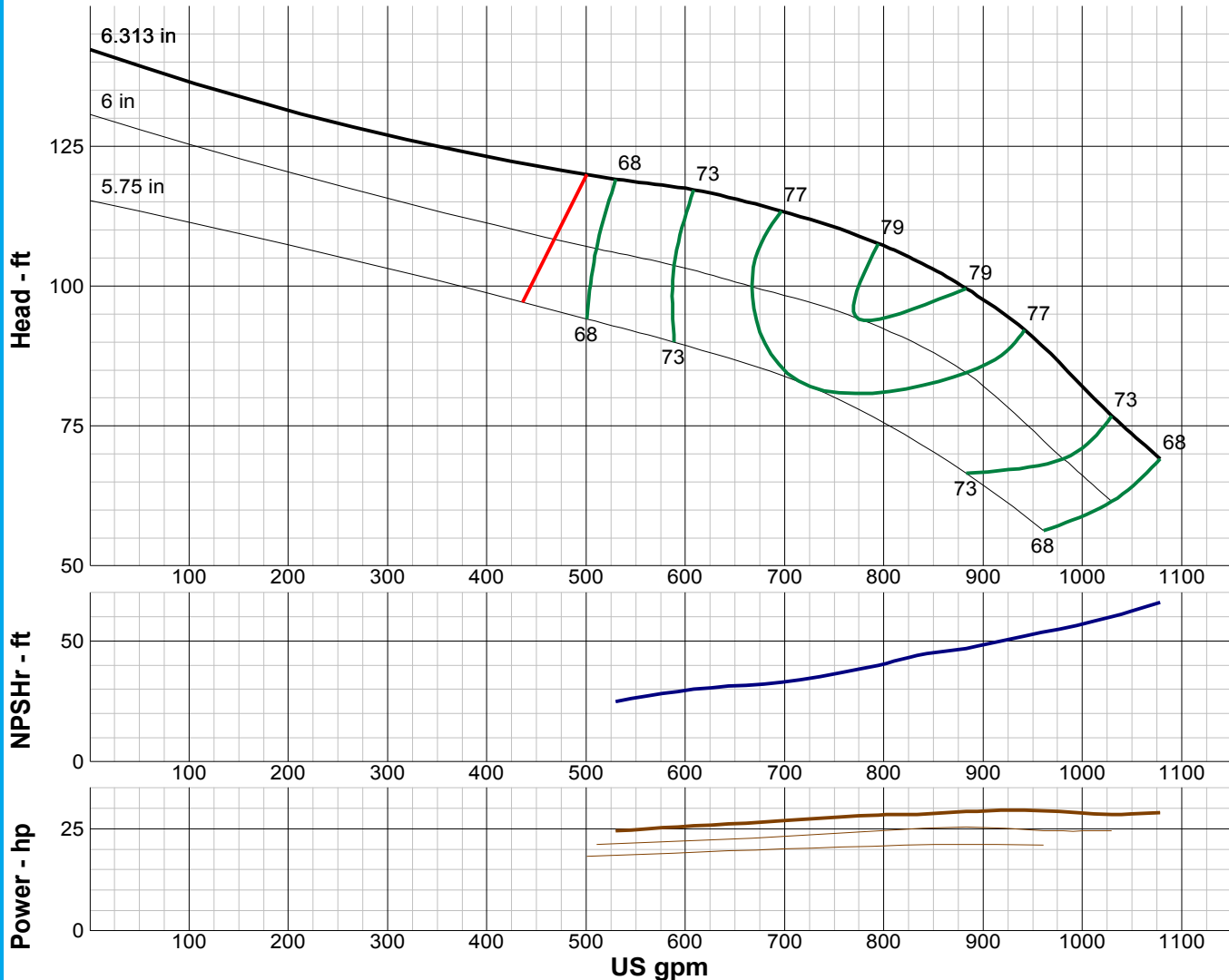
TURBINE PUMP CURVE

SINGLE STAGE PERFORMANCE

JANUARY 2010

480 SERIES

8EHS 3450 RPM



IMPELLER DATA		
IMPELLER NUMBER	2981	Minimum submergence above eye of bottom impeller: 24 IN.
TYPE	SEMI-OPEN	
THRUST FACTOR	K=5.40	
EYE AREA	8.48 SQ. IN.	
WEIGHT	3.25 LB.	

EFFICIENCY CORRECTION				
NUMBER OF BOWLS:	1	2	3	4
CHANGE AS FOLLOWS:	-3	-2	-1	0
CHANGE IN EFFICIENCY MAY AFFECT BOTH HEAD AND HORSEPOWER.				

PUMP MATERIAL EFFICIENCY CORRECTION				
	DUCTILE	BRONZE	NI-R	STAINLESS
IMPELLER MATERIAL:	-2	0	-1	-5
BOWL MATERIAL:	-2	-2	-2	-4

FLANGED BOWL DATA	
BOWL NUMBER	2883
BOWL MAX. DIAMETER	7.938 IN.
BOWL MIN. DIAMETER	7.500 IN.
MAX. NO. STAGES	5
ONE STAGE WEIGHT	130 LB.
ADD STAGE WEIGHT	30 LB.
STD. SHAFT DIA.	1.188 IN.
STD. LATERAL	0.375 IN.
DISCHARGE SIZE	5 - 6 IN.
DISCHARGE CONNECTION	THD
SUCTION SIZE	5 - 6 IN.
SUCTION CONNECTION	THD
MAX. SPHERE SIZE	0.625 IN.
MAX. OPERATIONAL P.S.I.	692 (SPECIAL)

Performance based on pumping clear, fresh water at a temperature not over 85° F., free of gas, air or abrasives and with bowls properly adjusted and submerged. Performance curve reflects Hydraulic Institute tolerances and guidelines.



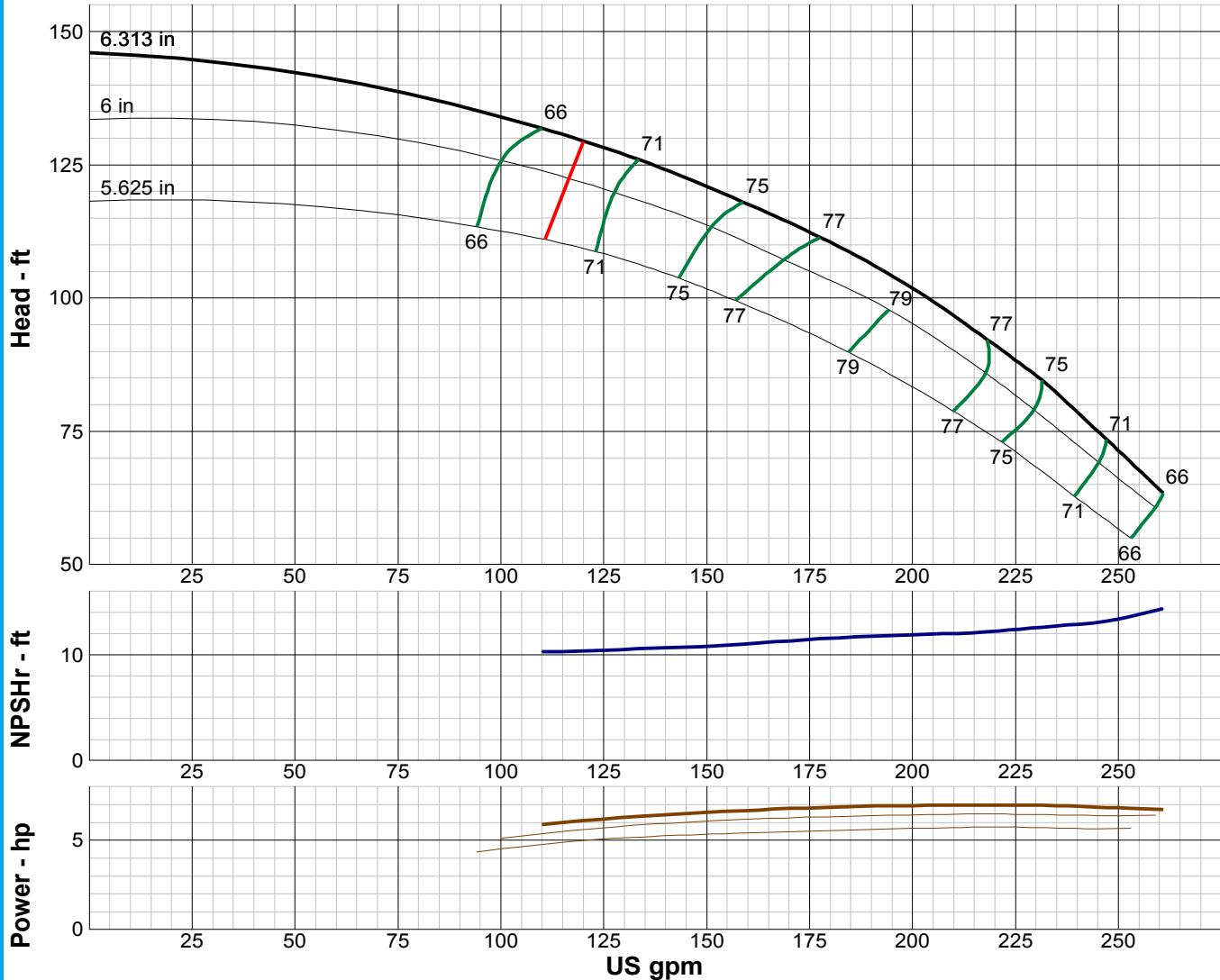
TURBINE PUMP CURVE

SINGLE STAGE PERFORMANCE

JANUARY 2010

480 SERIES

8JS 3450 RPM



IMPELLER DATA

IMPELLER NUMBER	3692	Minimum submergence above eye of bottom impeller: 18 IN.
TYPE	SEMI-OPEN	
THRUST FACTOR	K=3.52	
EYE AREA	3.18 SQ. IN.	
WEIGHT	3.55 LB.	

EFFICIENCY CORRECTION

NUMBER OF BOWLS:	1	2	3	4
CHANGE AS FOLLOWS:	-4	-2	0	0
CHANGE IN EFFICIENCY MAY AFFECT BOTH HEAD AND HORSEPOWER.				

PUMP MATERIAL EFFICIENCY CORRECTION

	DUCTILE	BRONZE	NI-R	STAINLESS
IMPELLER MATERIAL:	-2	0	-1	-5
BOWL MATERIAL:	-2	-2	-2	-4

FLANGED BOWL DATA

BOWL NUMBER	3629
BOWL MAX. DIAMETER	7.813 IN.
BOWL MIN. DIAMETER	7.500 IN.
MAX. NO. STAGES	15
ONE STAGE WEIGHT	130 LB.
ADD STAGE WEIGHT	30 LB.
STD. SHAFT DIA.	1.000 IN.
STD. LATERAL	0.438 IN.
DISCHARGE SIZE	5 - 6 IN.
DISCHARGE CONNECTION	THD
SUCTION SIZE	5 - 6 IN.
SUCTION CONNECTION	THD
MAX. SPHERE SIZE	0.250 IN.
MAX. OPERATIONAL P.S.I.	692 (SPECIAL)

Performance based on pumping clear, fresh water at a temperature not over 85° F., free of gas, air or abrasives and with bowls properly adjusted and submerged. Performance curve reflects Hydraulic Institute tolerances and guidelines.



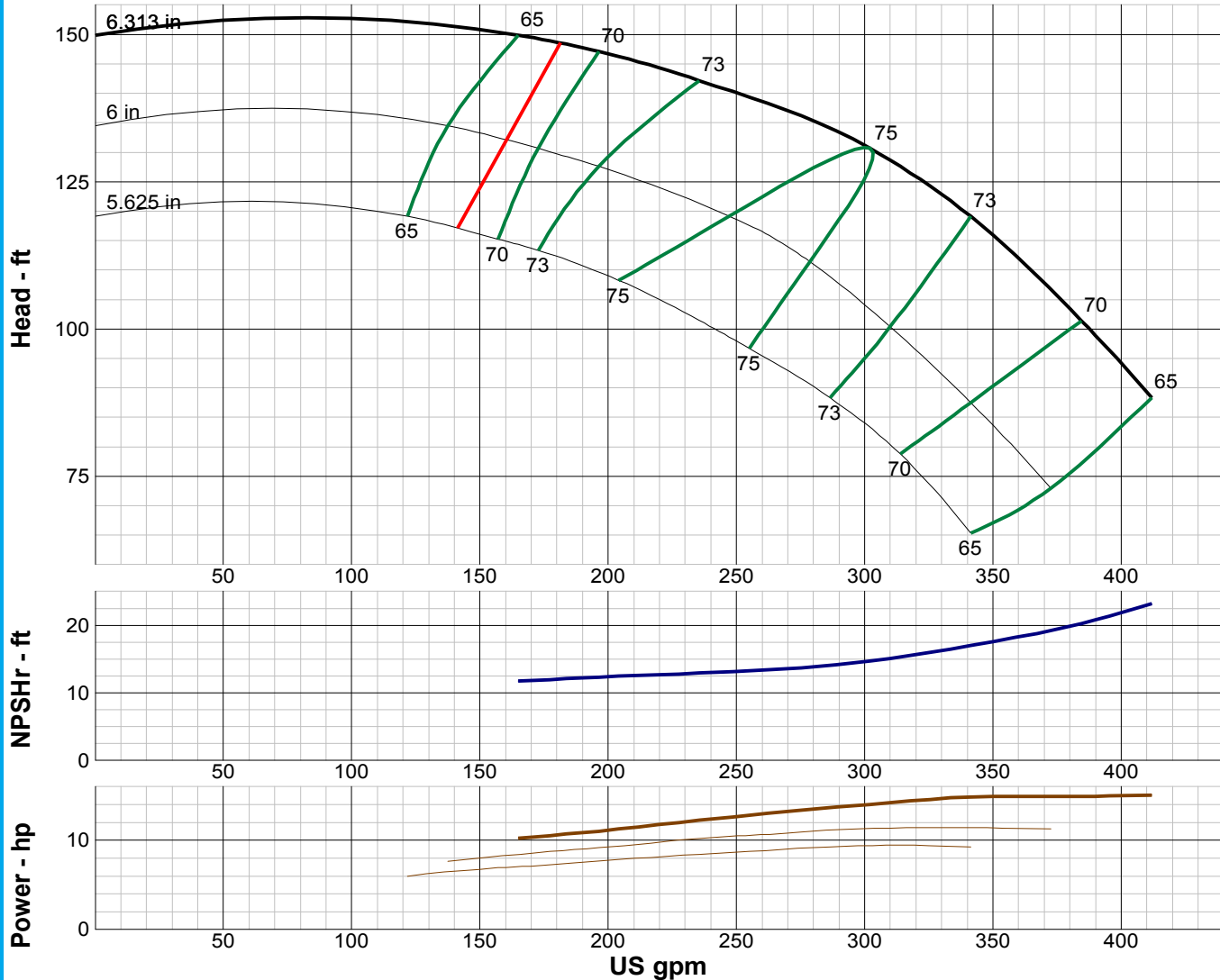
TURBINE PUMP CURVE

SINGLE STAGE PERFORMANCE

JANUARY 2010

480 SERIES

8LS 3450 RPM



IMPELLER DATA

IMPELLER NUMBER	3641	Minimum submergence above eye of bottom impeller: 18 IN.
TYPE	SEMI-OPEN	
THRUST FACTOR	K=3.34	
EYE AREA	4.64 SQ. IN.	
WEIGHT	4.25 LB.	

EFFICIENCY CORRECTION

NUMBER OF BOWLS:	1	2	3	4
CHANGE AS FOLLOWS:	-4	-2	0	0
CHANGE IN EFFICIENCY MAY AFFECT BOTH HEAD AND HORSEPOWER.				

PUMP MATERIAL EFFICIENCY CORRECTION

	DUCTILE	BRONZE	NI-R	STAINLESS
IMPELLER MATERIAL:	-2	0	-1	-5
BOWL MATERIAL:	-2	-2	-2	-4

FLANGED BOWL DATA

BOWL NUMBER	3629
BOWL MAX. DIAMETER	7.813 IN.
BOWL MIN. DIAMETER	7.500 IN.
MAX. NO. STAGES	12
ONE STAGE WEIGHT	130 LB.
ADD STAGE WEIGHT	30 LB.
STD. SHAFT DIA.	1.000 IN.
STD. LATERAL	0.438 IN.
DISCHARGE SIZE	5 - 6 IN.
DISCHARGE CONNECTION	THD
SUCTION SIZE	5 - 6 IN.
SUCTION CONNECTION	THD
MAX. SPHERE SIZE	0.250 IN.
MAX. OPERATIONAL P.S.I.	692 (SPECIAL)

Performance based on pumping clear, fresh water at a temperature not over 85° F., free of gas, air or abrasives and with bowls properly adjusted and submerged. Performance curve reflects Hydraulic Institute tolerances and guidelines.



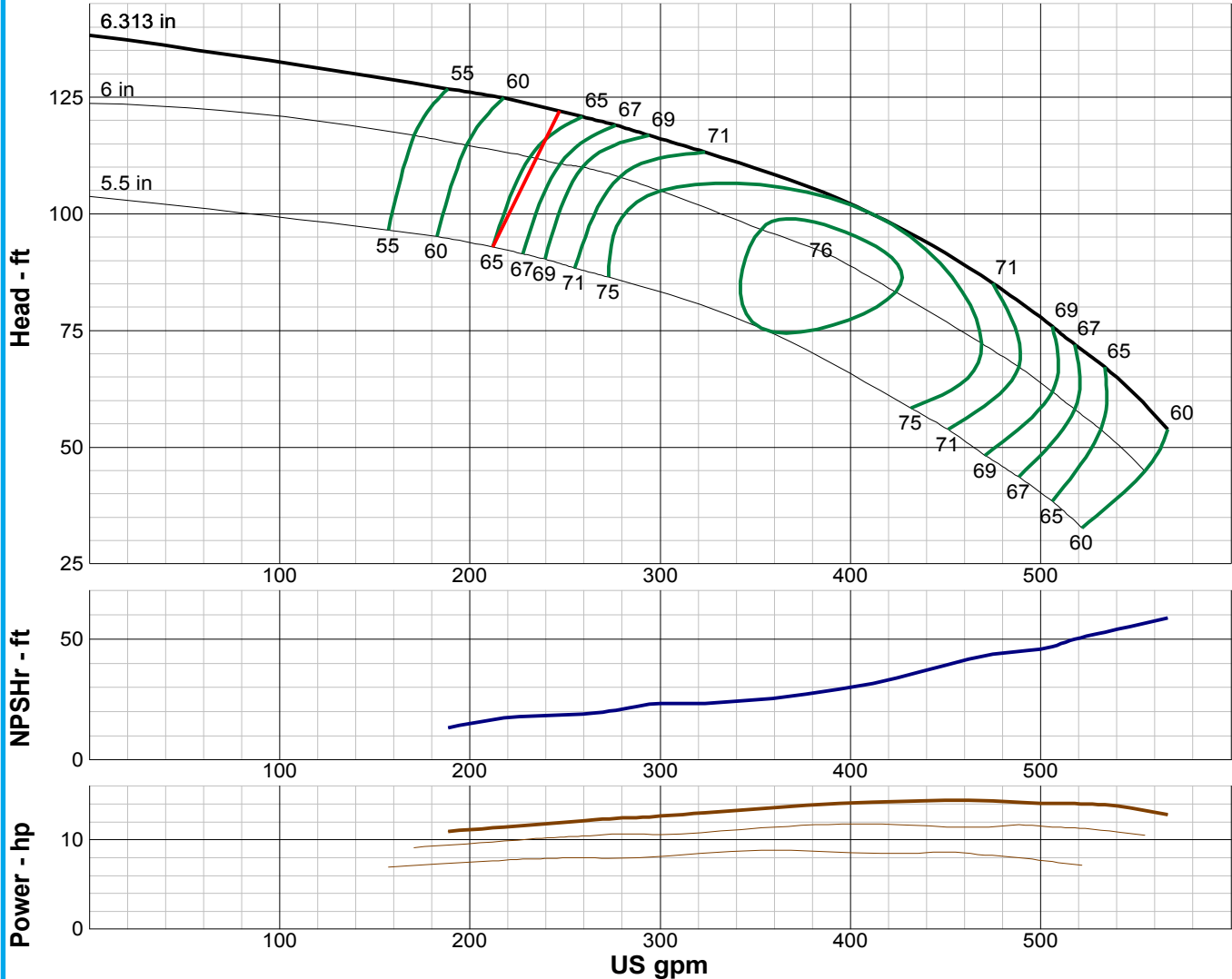
TURBINE PUMP CURVE

SINGLE STAGE PERFORMANCE

JANUARY 2010

480 SERIES

8KS 3450 RPM



IMPELLER DATA		
IMPELLER NUMBER	3693	Minimum submergence above eye of bottom impeller: 20 IN.
TYPE	SEMI-OPEN	
THRUST FACTOR	K=4.42	
EYE AREA	6.60 SQ. IN.	
WEIGHT	3.75 LB.	

EFFICIENCY CORRECTION				
NUMBER OF BOWLS:	1	2	3	
CHANGE AS FOLLOWS:	-4	-2	0	
CHANGE IN EFFICIENCY MAY AFFECT BOTH HEAD AND HORSEPOWER.				

PUMP MATERIAL EFFICIENCY CORRECTION				
	DUCTILE	BRONZE	NI-R	STAINLESS
IMPELLER MATERIAL:	-2	0	-1	-5
BOWL MATERIAL:	-2	-2	-2	-4

FLANGED BOWL DATA	
BOWL NUMBER	3591
BOWL MAX. DIAMETER	7.938 IN.
BOWL MIN. DIAMETER	7.500 IN.
MAX. NO. STAGES	10
ONE STAGE WEIGHT	130 LB.
ADD STAGE WEIGHT	30 LB.
STD. SHAFT DIA.	1.000 IN.
STD. LATERAL	0.438 IN.
DISCHARGE SIZE	5 - 6 IN.
DISCHARGE CONNECTION	THD
SUCTION SIZE	5 - 6 IN.
SUCTION CONNECTION	THD
MAX. SPHERE SIZE	0.375 IN.
MAX. OPERATIONAL P.S.I.	692 (SPECIAL)

Performance based on pumping clear, fresh water at a temperature not over 85° F., free of gas, air or abrasives and with bowls properly adjusted and submerged. Performance curve reflects Hydraulic Institute tolerances and guidelines.



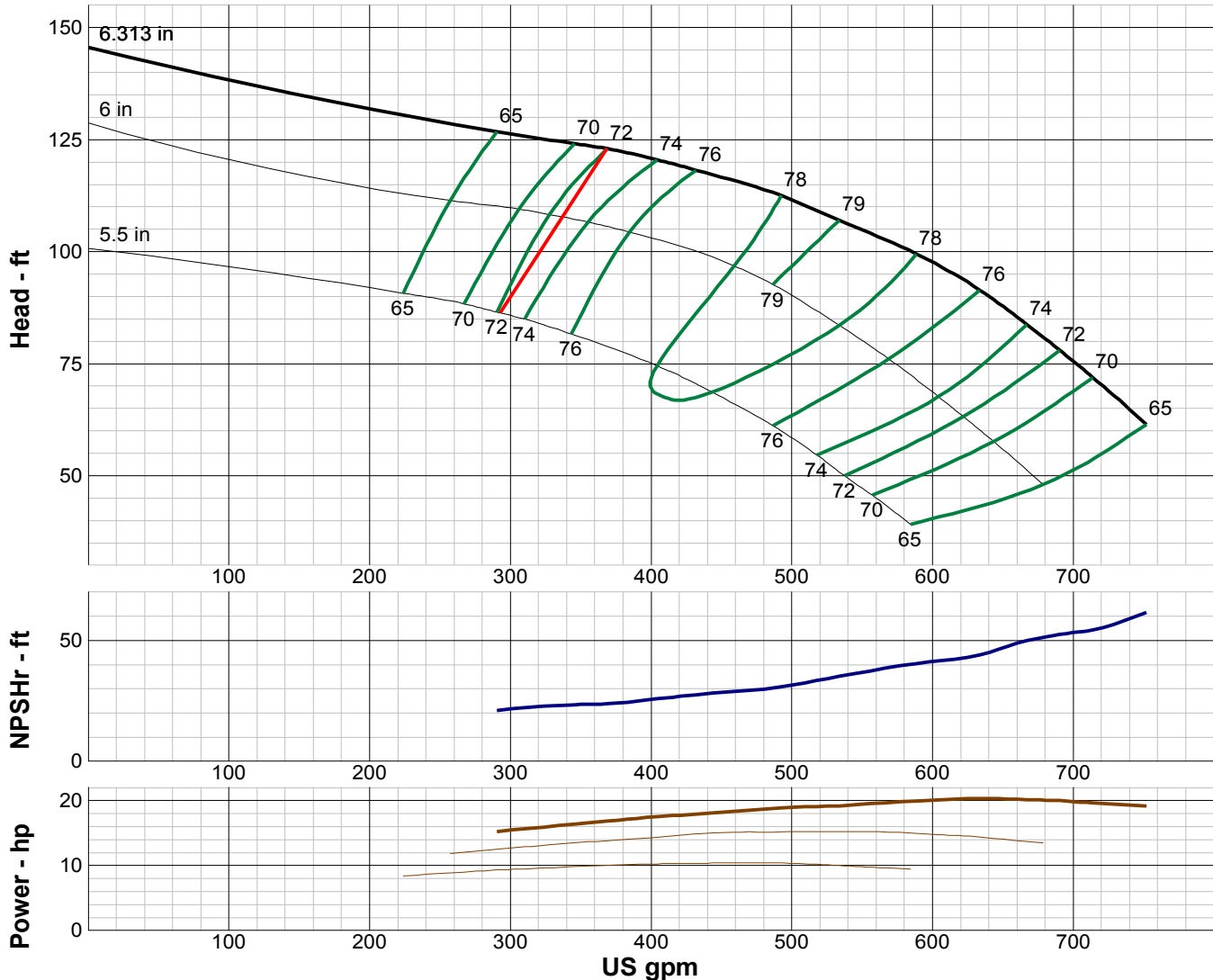
TURBINE PUMP CURVE

SINGLE STAGE PERFORMANCE

JANUARY 2010

480 SERIES

8MS 3450 RPM



IMPELLER DATA		
IMPELLER NUMBER	3590	Minimum submergence above eye of bottom impeller: 24 IN.
TYPE	SEMI-OPEN	
THRUST FACTOR	K=4.28	
EYE AREA	6.60 SQ. IN.	
WEIGHT	4.125 LB.	

EFFICIENCY CORRECTION					
NUMBER OF BOWLS:	1	2	3	4	5
CHANGE AS FOLLOWS:	-4	-3	-2	-1	0
CHANGE IN EFFICIENCY MAY AFFECT BOTH HEAD AND HORSEPOWER.					

PUMP MATERIAL EFFICIENCY CORRECTION				
	DUCTILE	BRONZE	NI-R	STAINLESS
IMPELLER MATERIAL:	-2	0	-1	-5
BOWL MATERIAL:	-2	-2	-2	-4

FLANGED BOWL DATA	
BOWL NUMBER	3591
BOWL MAX. DIAMETER	7.938 IN.
BOWL MIN. DIAMETER	7.500 IN.
MAX. NO. STAGES	7
ONE STAGE WEIGHT	130 LB.
ADD STAGE WEIGHT	30 LB.
STD. SHAFT DIA.	1.000 IN.
STD. LATERAL	0.438 IN.
DISCHARGE SIZE	5 - 6 IN.
DISCHARGE CONNECTION	THD
SUCTION SIZE	5 - 6 IN.
SUCTION CONNECTION	THD
MAX. SPHERE SIZE	0.375 IN.
MAX. OPERATIONAL P.S.I.	692 (SPECIAL)

Performance based on pumping clear, fresh water at a temperature not over 85° F., free of gas, air or abrasives and with bowls properly adjusted and submerged. Performance curve reflects Hydraulic Institute tolerances and guidelines.



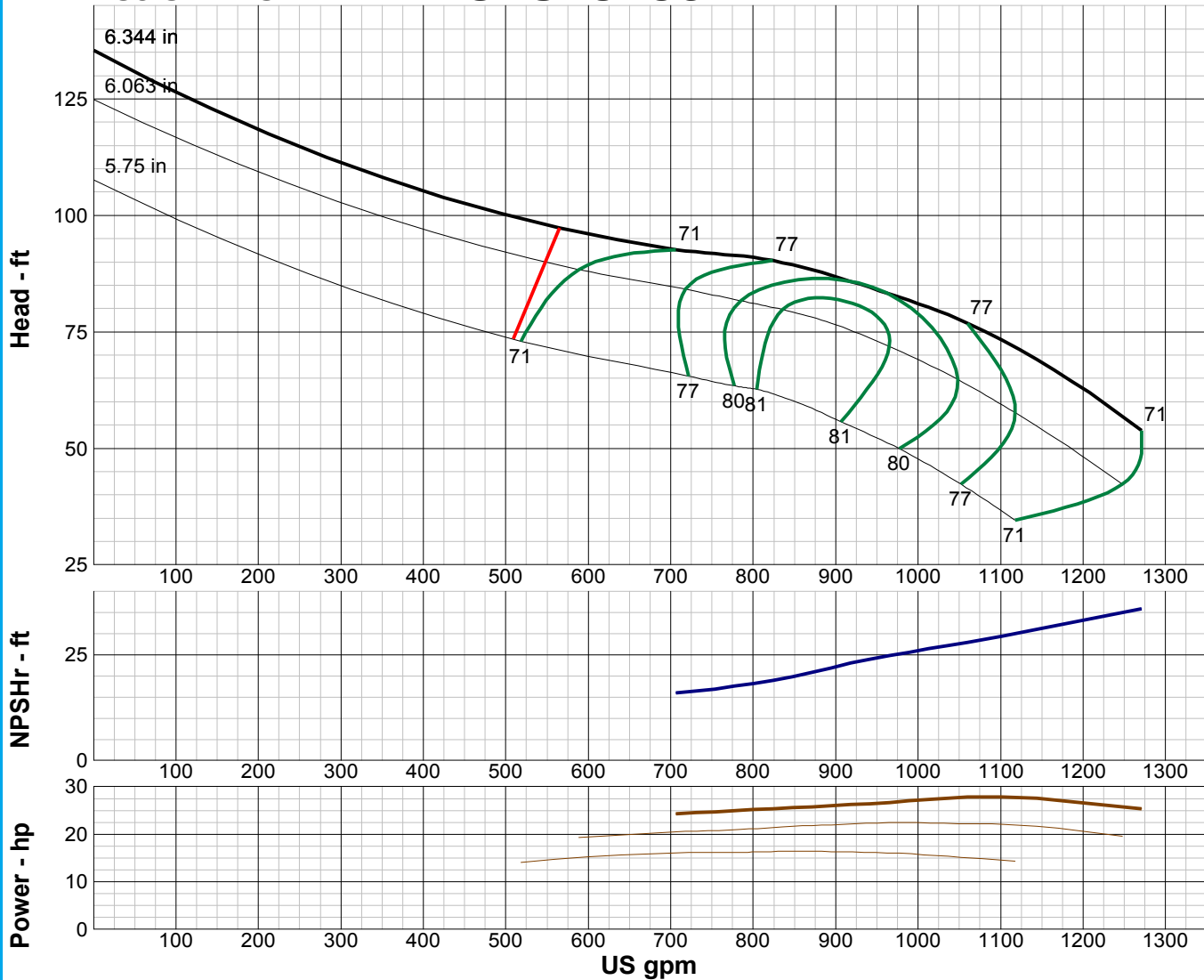
TURBINE PUMP CURVE

SINGLE STAGE PERFORMANCE

JANUARY 2010

480 SERIES

8YS 3450 RPM



IMPELLER DATA		
IMPELLER NUMBER	5506	Minimum submergence above eye of bottom impeller: 30 IN.
TYPE	SEMI-OPEN	
THRUST FACTOR	K=8.00	
EYE AREA	15.9 SQ. IN.	
WEIGHT	5.00 LB.	

EFFICIENCY CORRECTION					
NUMBER OF BOWLS:	1	2	3	4	
CHANGE AS FOLLOWS:	-3	-2	-1	0	
CHANGE IN EFFICIENCY MAY AFFECT BOTH HEAD AND HORSEPOWER.					

PUMP MATERIAL EFFICIENCY CORRECTION				
	DUCTILE	BRONZE	NI-R	STAINLESS
IMPELLER MATERIAL:	-2	0	-1	-5
BOWL MATERIAL:	-2	-2	-2	-4

FLANGED BOWL DATA	
BOWL NUMBER	5503
BOWL MAX. DIAMETER	7.938 IN.
BOWL MIN. DIAMETER	7.500 IN.
MAX. NO. STAGES	9
ONE STAGE WEIGHT	139 LB.
ADD STAGE WEIGHT	39 LB.
STD. SHAFT DIA.	1.188 IN.
STD. LATERAL	0.375 IN.
DISCHARGE SIZE	5 - 6 IN.
DISCHARGE CONNECTION	THD
SUCTION SIZE	5 - 6 IN.
SUCTION CONNECTION	THD
MAX. SPHERE SIZE	1.125 IN.
MAX. OPERATIONAL P.S.I.	692 (SPECIAL)

Performance based on pumping clear, fresh water at a temperature not over 85° F., free of gas, air or abrasives and with bowls properly adjusted and submerged. Performance curve reflects Hydraulic Institute tolerances and guidelines.



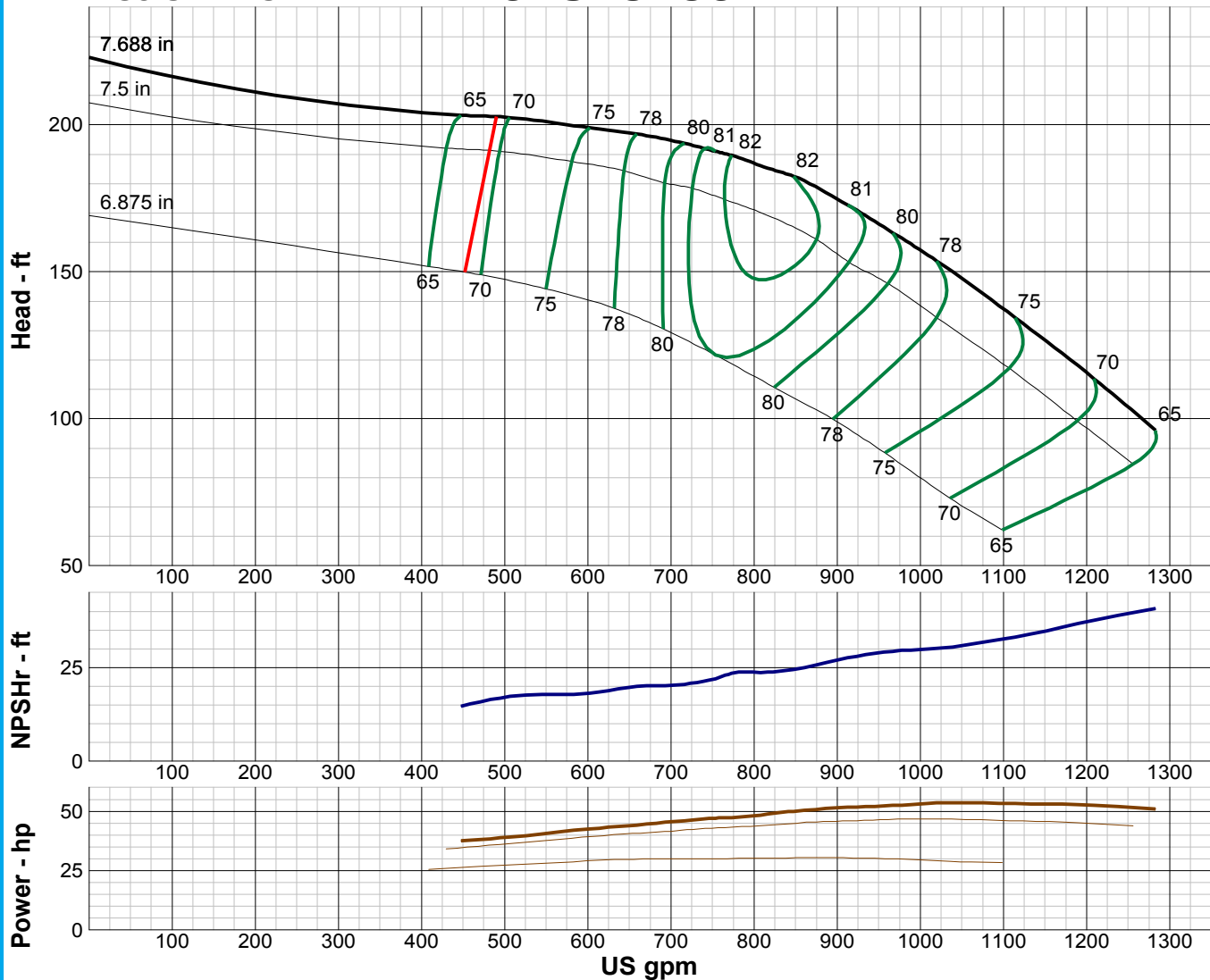
TURBINE PUMP CURVE

SINGLE STAGE PERFORMANCE

JANUARY 2010

480 SERIES

10LS 3450 RPM



IMPELLER DATA		
IMPELLER NUMBER	3103	Minimum submergence above eye of bottom impeller: 38 IN.
TYPE	SEMI-OPEN	
THRUST FACTOR	K=7.50	
EYE AREA	11.7 SQ. IN.	
WEIGHT	6.25 LB.	

EFFICIENCY CORRECTION					
NUMBER OF BOWLS:	1	2	3	4	
CHANGE AS FOLLOWS:	-4	-2	-1	0	
CHANGE IN EFFICIENCY MAY AFFECT BOTH HEAD AND HORSEPOWER.					

PUMP MATERIAL EFFICIENCY CORRECTION				
	DUCTILE	BRONZE	NI-R	STAINLESS
IMPELLER MATERIAL:	-2	0	-1	-2
BOWL MATERIAL:	-2	-2	-2	-3

FLANGED BOWL DATA	
BOWL NUMBER	3098
BOWL MAX. DIAMETER	9.500 IN.
BOWL MIN. DIAMETER	9.250 IN.
MAX. NO. STAGES	10
ONE STAGE WEIGHT	230 LB.
ADD STAGE WEIGHT	55 LB.
STD. SHAFT DIA.	1.500 IN.
STD. LATERAL	0.500 IN.
DISCHARGE SIZE	6 - 8 IN.
DISCHARGE CONNECTION	THD - FLG
SUCTION SIZE	6 - 8 IN.
SUCTION CONNECTION	THD
MAX. SPHERE SIZE	0.500 IN.
MAX. OPERATIONAL P.S.I.	595 (SPECIAL)

Performance based on pumping clear, fresh water at a temperature not over 85° F., free of gas, air or abrasives and with bowls properly adjusted and submerged. Performance curve reflects Hydraulic Institute tolerances and guidelines.



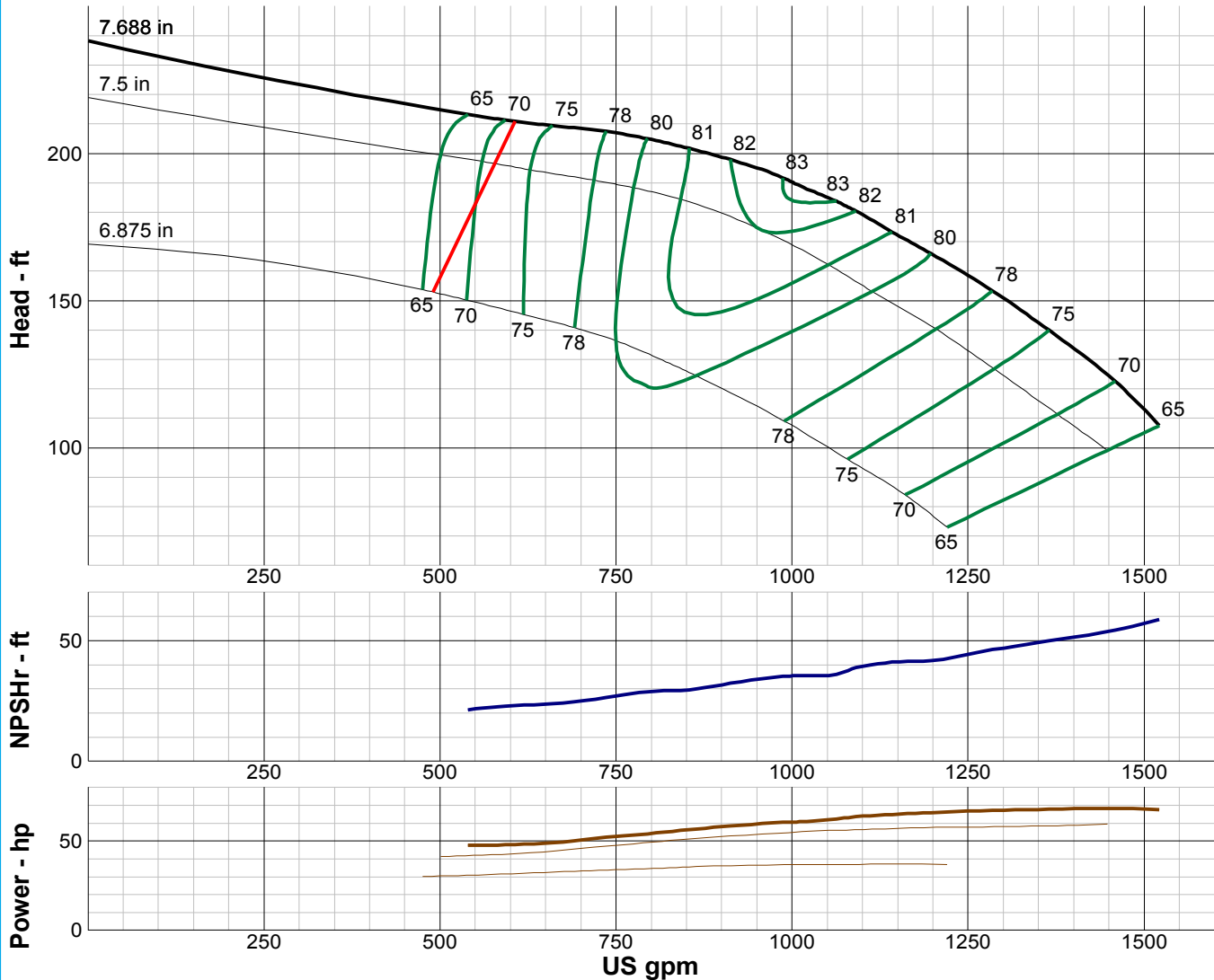
TURBINE PUMP CURVE

SINGLE STAGE PERFORMANCE

JANUARY 2010

480 SERIES

10MS 3450 RPM



IMPELLER DATA		
IMPELLER NUMBER	3099	Minimum submergence above eye of bottom impeller: 38 IN.
TYPE	SEMI-OPEN	
THRUST FACTOR	K=7.50	
EYE AREA	11.7 SQ. IN.	
WEIGHT	5.75 LB.	

FLANGED BOWL DATA	
BOWL NUMBER	3098
BOWL MAX. DIAMETER	9.500 IN.
BOWL MIN. DIAMETER	9.250 IN.
MAX. NO. STAGES	8
ONE STAGE WEIGHT	230 LB.
ADD STAGE WEIGHT	55 LB.
STD. SHAFT DIA.	1.500 IN.
STD. LATERAL	0.625 IN.
DISCHARGE SIZE	6 - 8 IN.
DISCHARGE CONNECTION	THD - FLG
SUCTION SIZE	6 - 8 IN.
SUCTION CONNECTION	THD
MAX. SPHERE SIZE	0.625 IN.
MAX. OPERATIONAL P.S.I.	595 (SPECIAL)

EFFICIENCY CORRECTION				
NUMBER OF BOWLS:	1	2	3	4
CHANGE AS FOLLOWS:	-4	-2	-1	0
CHANGE IN EFFICIENCY MAY AFFECT BOTH HEAD AND HORSEPOWER.				

PUMP MATERIAL EFFICIENCY CORRECTION				
	DUCTILE	BRONZE	NI-R	STAINLESS
IMPELLER MATERIAL:	-2	0	-1	-2
BOWL MATERIAL:	-2	-2	-2	-3

Performance based on pumping clear, fresh water at a temperature not over 85° F., free of gas, air or abrasives and with bowls properly adjusted and submerged. Performance curve reflects Hydraulic Institute tolerances and guidelines.



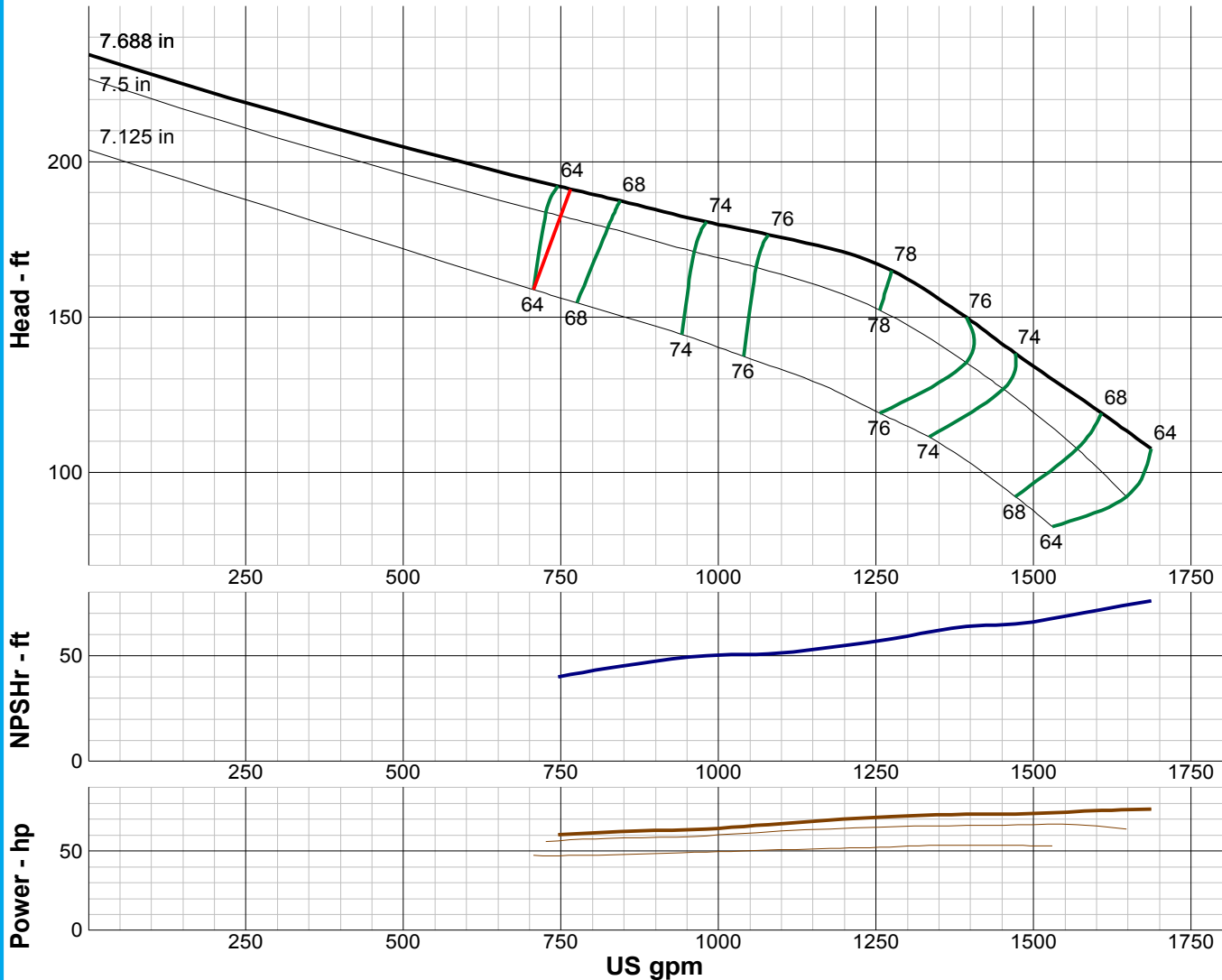
TURBINE PUMP CURVE

SINGLE STAGE PERFORMANCE

JANUARY 2010

480 SERIES

10HS 3450 RPM



IMPELLER DATA

IMPELLER NUMBER	2969	Minimum submergence above eye of bottom impeller: 39 IN.
TYPE	SEMI-OPEN	
THRUST FACTOR	K=9.20	
EYE AREA	14.9 SQ. IN.	
WEIGHT	5.25 LB.	

EFFICIENCY CORRECTION

NUMBER OF BOWLS:	1	2	3	4
CHANGE AS FOLLOWS:	-4	-2	-1	0

CHANGE IN EFFICIENCY MAY AFFECT BOTH HEAD AND HORSEPOWER.

PUMP MATERIAL EFFICIENCY CORRECTION

	DUCTILE	BRONZE	NI-R	STAINLESS
IMPELLER MATERIAL:	-2	0	-1	-2
BOWL MATERIAL:	-2	-2	-2	-3

FLANGED BOWL DATA

BOWL NUMBER	2968
BOWL MAX. DIAMETER	9.500 IN.
BOWL MIN. DIAMETER	9.250 IN.
MAX. NO. STAGES	7
ONE STAGE WEIGHT	230 LB.
ADD STAGE WEIGHT	55 LB.
STD. SHAFT DIA.	1.500 IN.
STD. LATERAL	0.625 IN.
DISCHARGE SIZE	6 - 8 IN.
DISCHARGE CONNECTION	THD - FLG
SUCTION SIZE	6 - 8 IN.
SUCTION CONNECTION	THD
MAX. SPHERE SIZE	0.500 IN.
MAX. OPERATIONAL P.S.I.	595 (SPECIAL)

Performance based on pumping clear, fresh water at a temperature not over 85° F., free of gas, air or abrasives and with bowls properly adjusted and submerged. Performance curve reflects Hydraulic Institute tolerances and guidelines.



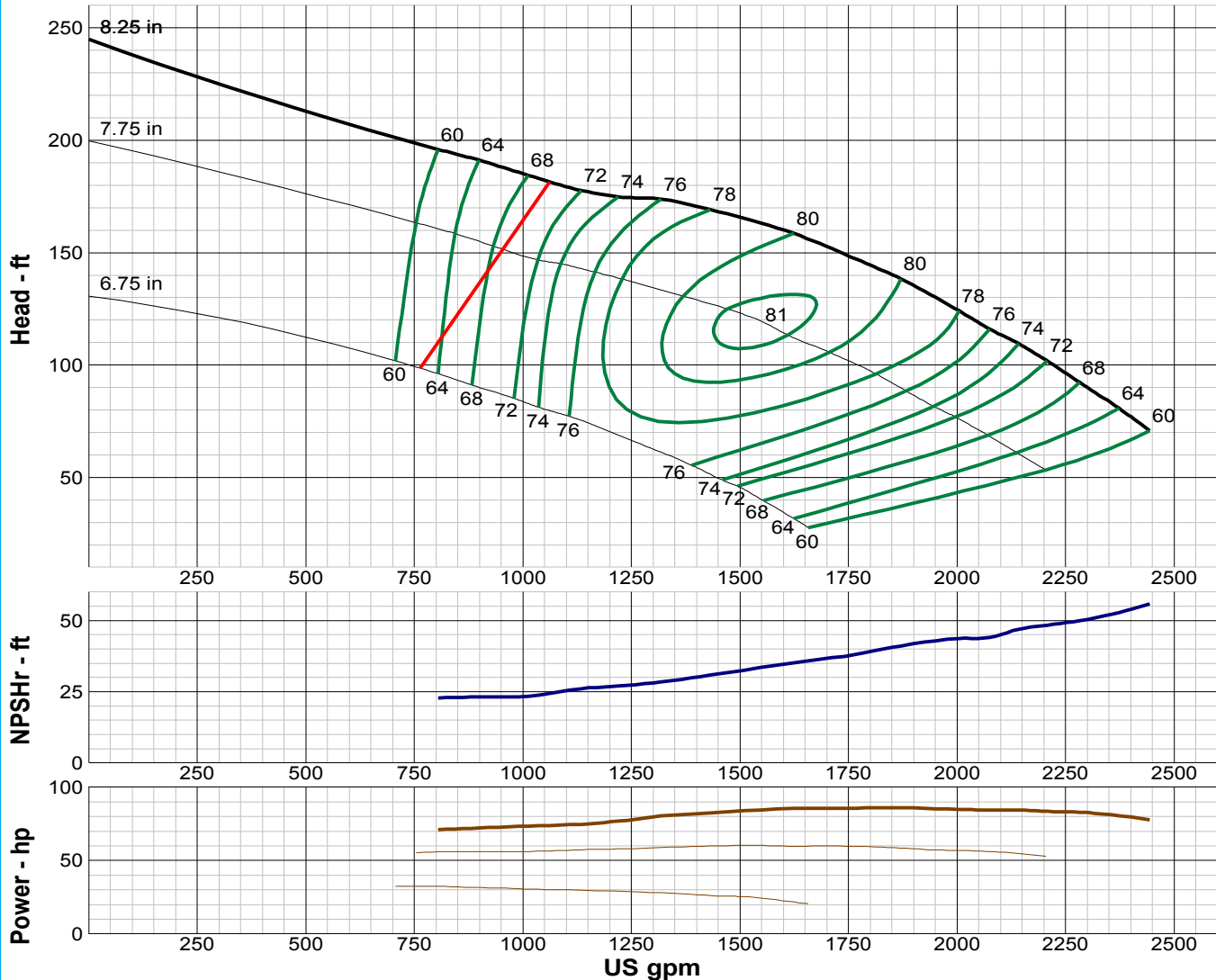
TURBINE PUMP CURVE

SINGLE STAGE PERFORMANCE

JANUARY 2010

480 SERIES

10WS 3450 RPM



IMPELLER DATA

IMPELLER NUMBER	3542	Minimum submergence above eye of bottom impeller: 28 IN.
TYPE	SEMI-OPEN	
THRUST FACTOR	K=11.40	
EYE AREA	19.4 SQ. IN.	
WEIGHT	7.25 LB.	

EFFICIENCY CORRECTION

NUMBER OF BOWLS:	1	2	3	4
CHANGE AS FOLLOWS:	-4	-2	-1	0
CHANGE IN EFFICIENCY MAY AFFECT BOTH HEAD AND HORSEPOWER.				

PUMP MATERIAL EFFICIENCY CORRECTION

	DUCTILE	BRONZE	NI-R	STAINLESS
IMPELLER MATERIAL:	-2	0	-1	-2
BOWL MATERIAL:	-2	-2	-2	-3

FLANGED BOWL DATA

BOWL NUMBER	3541
BOWL MAX. DIAMETER	9.875 IN.
BOWL MIN. DIAMETER	9.500 IN.
MAX. NO. STAGES	7
ONE STAGE WEIGHT	250 LB.
ADD STAGE WEIGHT	60 LB.
STD. SHAFT DIA.	1.688 IN.
STD. LATERAL	0.875 IN.
DISCHARGE SIZE	6 - 8 IN.
DISCHARGE CONNECTION	THD - FLG
SUCTION SIZE	6 - 8 IN.
SUCTION CONNECTION	THD
MAX. SPHERE SIZE	0.875 IN.
MAX. OPERATIONAL P.S.I.	455 (SPECIAL)

Performance based on pumping clear, fresh water at a temperature not over 85° F., free of gas, air or abrasives and with bowls properly adjusted and submerged. Performance curve reflects Hydraulic Institute tolerances and guidelines.



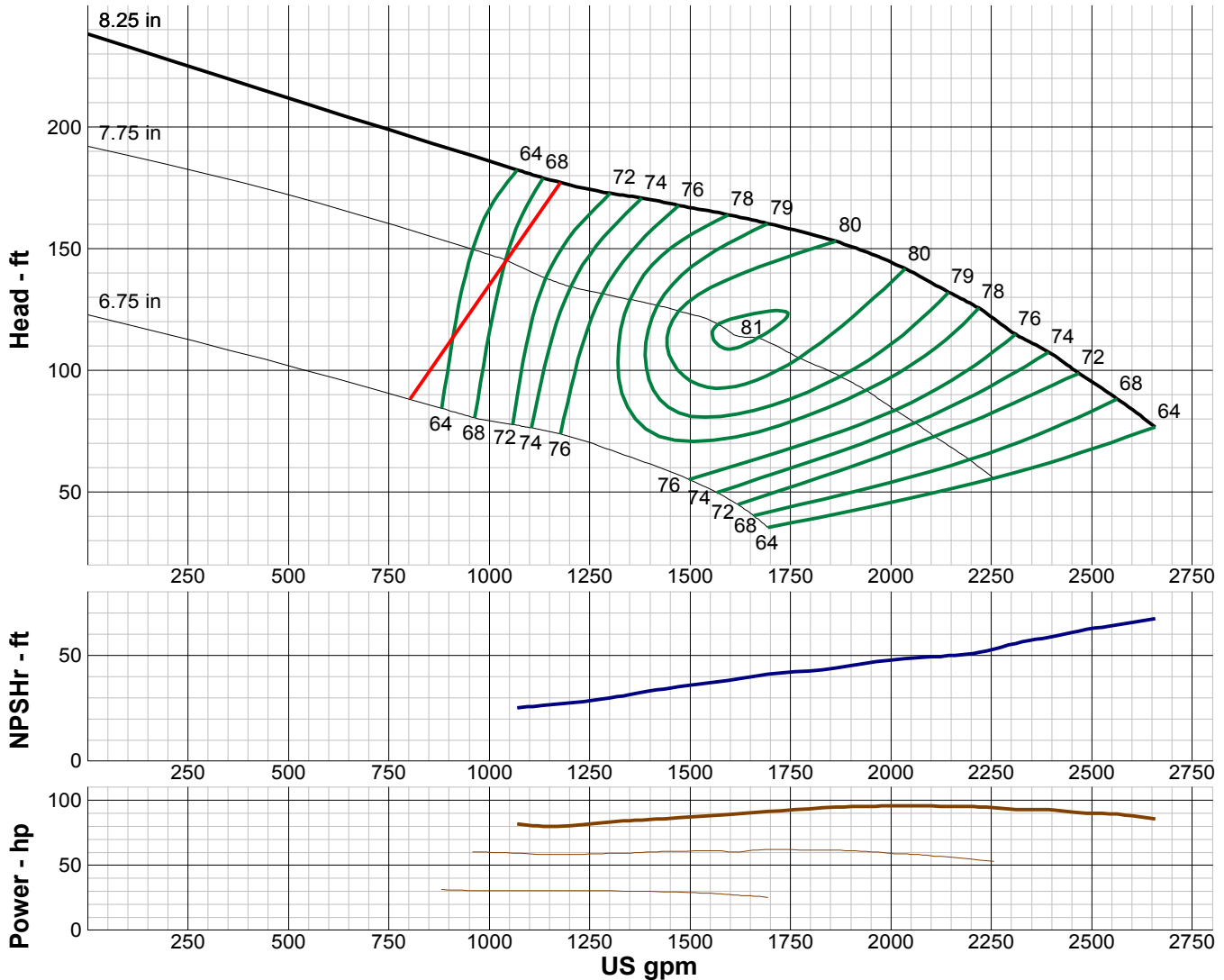
TURBINE PUMP CURVE

SINGLE STAGE PERFORMANCE

JANUARY 2010

480 SERIES

10YS 3450 RPM



IMPELLER DATA		
IMPELLER NUMBER	3542	Minimum submergence above eye of bottom impeller: 40 IN.
TYPE	SEMI-OPEN	
THRUST FACTOR	K=11.40	
EYE AREA	19.4 SQ. IN.	
WEIGHT	7.25 LB.	

EFFICIENCY CORRECTION					
NUMBER OF BOWLS:	1	2	3	4	
CHANGE AS FOLLOWS:	-4	-2	-1	0	
CHANGE IN EFFICIENCY MAY AFFECT BOTH HEAD AND HORSEPOWER.					

PUMP MATERIAL EFFICIENCY CORRECTION				
	DUCTILE	BRONZE	NI-R	STAINLESS
IMPELLER MATERIAL:	-2	0	-1	-2
BOWL MATERIAL:	-2	-2	-2	-3

FLANGED BOWL DATA	
BOWL NUMBER	3541
BOWL MAX. DIAMETER	9.875 IN.
BOWL MIN. DIAMETER	9.500 IN.
MAX. NO. STAGES	8
ONE STAGE WEIGHT	250 LB.
ADD STAGE WEIGHT	60 LB.
STD. SHAFT DIA.	1.688 IN.
STD. LATERAL	0.750 IN.
DISCHARGE SIZE	6 - 8 IN.
DISCHARGE CONNECTION	THD - FLG
SUCTION SIZE	6 - 8 IN.
SUCTION CONNECTION	THD
MAX. SPHERE SIZE	0.875 IN.
MAX. OPERATIONAL P.S.I.	455 (SPECIAL)

Performance based on pumping clear, fresh water at a temperature not over 85° F., free of gas, air or abrasives and with bowls properly adjusted and submerged. Performance curve reflects Hydraulic Institute tolerances and guidelines.